

On locating clusters of zeros of analytic functions

P. Kravanja T. Sakurai M. Van Barel

Report TW 280, July 1998



Katholieke Universiteit Leuven
Department of Computer Science
Celestijnenlaan 200A – B-3001 Heverlee (Belgium)

On locating clusters of zeros of analytic functions

P. Kravanja T. Sakurai M. Van Barel

Report TW280, July 1998

Department of Computer Science, K.U.Leuven

Abstract

Given an analytic function f and a Jordan curve γ that does not pass through any zero of f , we consider the problem of computing *all* the zeros of f that lie inside γ , together with their respective multiplicities. Our principal means of obtaining information about the location of these zeros is a certain symmetric bilinear form that can be evaluated via numerical integration along γ . If f has one or several clusters of zeros, then the mapping from the ordinary moments associated with this form to the zeros and their respective multiplicities is very ill-conditioned. We present numerical methods to calculate the centre of a cluster and its size, i.e., the arithmetic mean of the zeros that form a certain cluster and the total number of zeros in this cluster, respectively. Our approach relies on formal orthogonal polynomials and rational interpolation at roots of unity. Numerical examples illustrate the effectiveness of our techniques.

AMS(MOS) Classification : Primary : 65H05, Secondary : 65E05.

ON LOCATING CLUSTERS OF ZEROS OF ANALYTIC FUNCTIONS

PETER KRAVANJA, TETSUYA SAKURAI, AND MARC VAN BAREL

ABSTRACT. Given an analytic function f and a Jordan curve γ that does not pass through any zero of f , we consider the problem of computing *all* the zeros of f that lie inside γ , together with their respective multiplicities. Our principal means of obtaining information about the location of these zeros is a certain symmetric bilinear form that can be evaluated via numerical integration along γ . If f has one or several clusters of zeros, then the mapping from the ordinary moments associated with this form to the zeros and their respective multiplicities is very ill-conditioned. We present numerical methods to calculate the centre of a cluster and its size, i.e., the arithmetic mean of the zeros that form a certain cluster and the total number of zeros in this cluster, respectively. Our approach relies on formal orthogonal polynomials and rational interpolation at roots of unity. Numerical examples illustrate the effectiveness of our techniques.

1. INTRODUCTION

Let W be a simply connected region in \mathbb{C} , $f : W \rightarrow \mathbb{C}$ analytic in W , and γ a positively oriented Jordan curve in W that does not pass through any zero of f . We consider the problem of computing *all* the zeros of f that lie in the interior of γ , together with their respective multiplicities. Our principal means of obtaining information about the location of these zeros is a certain symmetric bilinear form that can be evaluated via numerical integration along γ . If f has one or several clusters of zeros, then the mapping from the ordinary moments associated with this form to the zeros and their respective multiplicities is very ill-conditioned. We will present numerical methods to calculate the centre of a cluster and its size, i.e., the arithmetic mean of the zeros that form a certain cluster and the total number of zeros in this cluster, respectively. This information enables one to zoom into a certain cluster: its zeros can be calculated separately from the other zeros of f . By shifting the origin in the complex plane to the centre of a certain cluster, its zeros become better relatively separated, which is appropriate in floating point arithmetic and reduces the ill-conditioning.

Let N denote the total number of zeros of f that lie in the interior of γ , i.e., the number of zeros where each zero is counted according to its multiplicity. Suppose that $N > 0$. Let n be the number of mutually distinct zeros of f that lie in the interior of γ . Let z_1, \dots, z_n be these zeros and ν_1, \dots, ν_n their respective multiplicities. An easy calculation shows that z_k is a simple pole of f'/f with residue ν_k for $k = 1, \dots, n$. It follows that

$$N = \frac{1}{2\pi i} \int_{\gamma} \frac{f'(z)}{f(z)} dz$$

and thus N can be calculated via numerical integration. Methods for the determination of zeros of analytic functions that are based on the numerical evaluation of integrals are called *quadrature methods*. A review of such methods was given by Ioakimidis [18].

This paper is organized as follows. In Section 2 we introduce a symmetric bilinear form $\langle \cdot, \cdot \rangle$ that is related to f and γ and we study the polynomials that are mutually orthogonal with respect to this form. These polynomials are called *formal orthogonal polynomials* (FOPs). The problem of computing z_1, \dots, z_n is shown to be equivalent to that of computing the zeros of the n th degree FOP. In Section 3 we suppose that z_1, \dots, z_n can be grouped into m clusters. We introduce a symmetric bilinear form $\langle \cdot, \cdot \rangle_m$ that is related to the centres and the sizes of the clusters, and we show that the form $\langle \cdot, \cdot \rangle_m$ approximates $\langle \cdot, \cdot \rangle$. In Section 4 we present an algorithm to compute

Date: July 1998.

1991 Mathematics Subject Classification. 65H05, 65E05.

FOPs in their product representation, i.e., the polynomials are represented in terms of their zeros. In Section 6 we attack our problem in an entirely different way, based on rational interpolation at roots of unity. However, we will show that the denominator polynomials of the interpolants are FOPs with respect to a certain form $\langle\langle \cdot, \cdot \rangle\rangle$ and that, under certain conditions, the forms $\langle \cdot, \cdot \rangle$ and $\langle\langle \cdot, \cdot \rangle\rangle$ coincide. This enables us to calculate the FOPs with respect to $\langle \cdot, \cdot \rangle$ in a different way. Numerical examples are presented in Section 5 and 7.

Remark. Our aim is to present techniques for computing zeros of analytic functions that give very accurate results. As the reader will notice, if we have a choice between several options for a certain part of an algorithm, then we will always choose the option that, in our experience, gives the most accurate results, even if it is the most expensive (though still within the limits of what is reasonable, of course) in terms of number of floating point operations. The emphasis lies on accuracy.

2. FORMAL ORTHOGONAL POLYNOMIALS

Let \mathcal{P} be the linear space of polynomials with complex coefficients. We define a symmetric bilinear form

$$\langle \cdot, \cdot \rangle : \mathcal{P} \times \mathcal{P} \rightarrow \mathbb{C}$$

by setting

$$(1) \quad \langle \phi, \psi \rangle := \frac{1}{2\pi i} \int_{\gamma} \phi(z) \psi(z) \frac{f'(z)}{f(z)} dz = \sum_{k=1}^n \nu_k \phi(z_k) \psi(z_k)$$

for any two polynomials $\phi, \psi \in \mathcal{P}$. Note that $\langle \cdot, \cdot \rangle$ can be evaluated via numerical integration. Let $s_p := \langle 1, z^p \rangle$ for $p = 0, 1, 2, \dots$. These ordinary moments are equal to the Newton sums of the unknown zeros,

$$s_p = \sum_{k=1}^n \nu_k z_k^p, \quad p = 0, 1, 2, \dots$$

In particular, $s_0 = N$. Let H_k be the $k \times k$ Hankel matrix

$$H_k := [s_{p+q}]_{p,q=0}^{k-1} = \begin{bmatrix} s_0 & s_1 & \cdots & s_{k-1} \\ s_1 & & \ddots & \vdots \\ \vdots & \ddots & & \vdots \\ s_{k-1} & \cdots & \cdots & s_{2k-2} \end{bmatrix}$$

for $k = 1, 2, \dots$. Note that the form $\langle \cdot, \cdot \rangle$ is completely determined by the sequence of moments $(s_p)_{p \geq 0}$. In Section 1 we mentioned that the problem of computing all the zeros of f that lie inside γ is ill-conditioned in case f has one or several clusters of zeros. Mathematically, this refers to the conditioning of the mapping $(s_p)_{p \geq 0} \mapsto (z_1, \dots, z_n, \nu_1, \dots, \nu_n)$.

A monic polynomial φ_t of degree $t \geq 0$ that satisfies

$$(2) \quad \langle z^k, \varphi_t(z) \rangle = 0, \quad k = 0, 1, \dots, t-1,$$

is called a *formal orthogonal polynomial* (FOP) of degree t . (Observe that condition (2) is void for $t = 0$.) The adjective *formal* emphasizes the fact that, in general, the form $\langle \cdot, \cdot \rangle$ does not define a true inner product. An important consequence of this fact is that, in contrast to polynomials that are orthogonal with respect to a true inner product, FOPs φ_t need not exist or need not be unique for every degree t . (For details, see for example [13] and the references cited therein.) If (2) is satisfied and φ_t is unique, then φ_t is called a *regular FOP* and t a *regular index*. If we set

$$\varphi_t(z) =: u_{0,t} + u_{1,t}z + \cdots + u_{t-1,t}z^{t-1} + z^t$$

then condition (2) translates into the Yule-Walker system

$$(3) \quad \begin{bmatrix} s_0 & s_1 & \cdots & s_{t-1} \\ s_1 & & \ddots & \vdots \\ \vdots & \ddots & & \vdots \\ s_{t-1} & \cdots & \cdots & s_{2t-2} \end{bmatrix} \begin{bmatrix} u_{0,t} \\ u_{1,t} \\ \vdots \\ u_{t-1,t} \end{bmatrix} = - \begin{bmatrix} s_t \\ s_{t+1} \\ \vdots \\ s_{2t-1} \end{bmatrix}.$$

Hence, the regular FOP of degree $t \geq 1$ exists if and only if the matrix H_t is nonsingular.

The following theorem characterizes n , the number of mutually distinct zeros.

Theorem 1. $n = \text{rank } H_{n+p}$ for every nonnegative integer p . In particular, $n = \text{rank } H_N$.

Proof. Let p be a nonnegative integer. The matrix H_{n+p} can be written as

$$\begin{aligned} H_{n+p} &= \sum_{k=1}^n \nu_k \begin{bmatrix} 1 & \cdots & z_k^{n+p-1} \\ \vdots & & \vdots \\ z_k^{n+p-1} & \cdots & z_k^{2(n+p)-2} \end{bmatrix} \\ &= \sum_{k=1}^n \nu_k \begin{bmatrix} 1 \\ \vdots \\ z_k^{n+p-1} \end{bmatrix} [1 \quad \cdots \quad z_k^{n+p-1}]. \end{aligned}$$

This implies that $\text{rank } H_{n+p} \leq n$. However, H_n is nonsingular. Indeed, one can easily verify that H_n can be factorized as $H_n = V_n D_n V_n^T$ where V_n is the Vandermonde matrix $V_n := [z_s^r]_{r=0, s=1}^{n-1, n}$ and D_n is the diagonal matrix $D_n := \text{diag}(\nu_1, \dots, \nu_n)$. Therefore $\text{rank } H_{n+p} \geq n$. It follows that $\text{rank } H_{n+p} = n$. \square

Thus H_n is nonsingular whereas H_t is singular for $t > n$. Note that $H_1 = [s_0]$ is nonsingular by assumption. The regular FOP of degree 1 exists and is given by $\varphi_1(z) = z - \mu$ where

$$\mu := \frac{s_1}{s_0} = \frac{\sum_{k=1}^n \nu_k z_k}{\sum_{k=1}^n \nu_k}$$

is the arithmetic mean of the zeros. Theorem 1 implies that the regular FOP φ_n of degree n exists and tells us also that regular FOPs of degree larger than n do not exist. The polynomial φ_n is easily seen to be

$$(4) \quad \varphi_n(z) = (z - z_1) \cdots (z - z_n).$$

It is the monic polynomial of degree n that has z_1, \dots, z_n as simple zeros.

Note. Kronecker's Theorem [22, p.37] tells us that the infinite Hankel matrix $H := [s_{p+q}]_{p,q \geq 0}$ has finite rank if and only if its *symbol*, which is defined as the formal Laurent series

$$\frac{s_0}{z} + \frac{s_1}{z^2} + \frac{s_2}{z^3} + \cdots,$$

represents a rational function of z . This is indeed the case. It is easily seen that

$$(5) \quad \sum_{k=1}^n \frac{\nu_k}{z - z_k} = \frac{s_0}{z} + \frac{s_1}{z^2} + \frac{s_2}{z^3} + \cdots \quad \text{near } z = \infty.$$

In systems theory the problem of reconstructing the rational function that appears in the left hand side of (5) from the sequence of moments $(s_p)_{p \geq 0}$ is called a *minimal realization problem*. In that context the moments are called *Markov parameters*. Note that the left hand side of (5) is a rational function of type $[n-1/n]$ and that its denominator polynomial is given by $\varphi_n(z)$.

If H_n is strongly nonsingular, i.e., if all its leading principal submatrices are nonsingular, then we have a full set $\{\varphi_0, \varphi_1, \dots, \varphi_n\}$ of regular FOPs.

What happens if H_n is not strongly nonsingular? By filling up the gaps in the sequence of existing regular FOPs it is possible to define a sequence $\{\varphi_t\}_{t=0}^{\infty}$, with φ_t a monic polynomial of degree t , such that if these polynomials are grouped into blocks according to the sequence of

regular indices, then polynomials belonging to different blocks are orthogonal with respect to $\langle \cdot, \cdot \rangle$. More precisely, define $\{\varphi_t\}_{t=0}^\infty$ as follows. If t is a regular index, then let φ_t be the regular FOP of degree t . Else define φ_t as $\varphi_r \psi_{t,r}$ where r is the largest regular index less than t and $\psi_{t,r}$ is an arbitrary monic polynomial of degree $t - r$. In the latter case φ_t is called an *inner polynomial*. If $\psi_{t,r}(z) = z^{t-r}$ then we say that φ_t is defined *by using the standard monomial basis*. These polynomials $\{\varphi_t\}_{t=0}^\infty$ can be grouped into blocks. Each block starts with a regular FOP and the remaining polynomials are inner polynomials. Note that the last block has infinite length. The block orthogonality property is expressed by the fact that the Gram matrix $G_n := [\langle \varphi_r, \varphi_s \rangle]_{r,s=0}^{n-1}$ is block diagonal. The diagonal blocks are nonsingular, symmetric and zero above the main antidiagonal. If all the inner polynomials in a certain block are defined by using the standard monomial basis, then the corresponding diagonal block has Hankel structure. (See Bultheel and Van Barel [6] for more details.)

Theorem 1, (1) and (4) immediately imply the following.

Theorem 2. *Let $t \geq n$. Then $\varphi_t(z_k) = 0$ for $k = 1, \dots, n$ and $\langle z^p, \varphi_t(z) \rangle = 0$ for all $p \geq 0$.*

Thus the mutually distinct zeros z_1, \dots, z_n of f that lie inside γ are among the zeros of the FOP $\varphi_t(z)$ for all $t \geq n$. In Section 4 we will return to the question of how to obtain the value of n and how to compute FOPs. Theorem 1 suggests to determine n from the singular value decomposition of H_N but this approach is impractical. Instead, the value of n will be determined indirectly. We will show how FOPs can be computed in their product representation. Therefore the polynomial $\varphi_n(z)$ immediately leads to the zeros z_1, \dots, z_n .

Once n and z_1, \dots, z_n have been found, the multiplicities ν_1, \dots, ν_n can be calculated by solving the Vandermonde system

$$\begin{bmatrix} 1 & \cdots & 1 \\ z_1 & \cdots & z_n \\ \vdots & & \vdots \\ z_1^{n-1} & \cdots & z_n^{n-1} \end{bmatrix} \begin{bmatrix} \nu_1 \\ \nu_2 \\ \vdots \\ \nu_n \end{bmatrix} = \begin{bmatrix} s_0 \\ s_1 \\ \vdots \\ s_{n-1} \end{bmatrix}.$$

This can be done via the algorithm of Gohberg and Koltracht [12]. This algorithm takes full account of the structure of a Vandermonde matrix and is not only faster but also more accurate than general purpose algorithms such as Gaussian elimination with partial pivoting. It has arithmetic complexity $\mathcal{O}(n^2)$.

3. CLUSTERS OF ZEROS

Suppose that the zeros of f that lie inside γ can be grouped into m clusters. Let I_1, \dots, I_m be index sets that define these clusters, and let

$$\mu_j := \sum_{k \in I_j} \nu_k \quad \text{and} \quad c_j := \frac{1}{\mu_j} \sum_{k \in I_j} \nu_k z_k$$

for $j = 1, \dots, m$. In other words, μ_j is equal to the total number of zeros that form cluster j (its “weight”) whereas c_j is equal to the arithmetic mean of the zeros in cluster j (its “centre of gravity”). We assume that the centres c_1, \dots, c_m are mutually distinct. For $k = 1, \dots, n$ we also define $\zeta_k := z_k - c_j$ if $k \in I_j$. From the definition of μ_j and c_j it follows that

$$\sum_{k \in I_j} \nu_k \zeta_k = 0, \quad j = 1, \dots, m.$$

Define the symmetric bilinear form $\langle \cdot, \cdot \rangle_m$ by

$$\langle \phi, \psi \rangle_m := \sum_{j=1}^m \mu_j \phi(c_j) \psi(c_j)$$

for any two polynomials $\phi, \psi \in \mathcal{P}$. This form is related to the form $\langle \cdot, \cdot \rangle$ in an obvious way: instead of the zeros z_1, \dots, z_n and their multiplicities ν_1, \dots, ν_n , we now use the centres of gravity

c_1, \dots, c_m and the weights μ_1, \dots, μ_m of the clusters. Let

$$\delta := \max_{1 \leq k \leq n} |\zeta_k|.$$

The following theorem tells us that $\langle \cdot, \cdot \rangle_m$ approximates $\langle \cdot, \cdot \rangle$ (and vice versa).

Theorem 3. *Let $\phi, \psi \in \mathcal{P}$. Then $\langle \phi, \psi \rangle = \langle \phi, \psi \rangle_m + \mathcal{O}(\delta^2)$, $\delta \rightarrow 0$.*

Proof. The following holds:

$$\begin{aligned} \langle \phi, \psi \rangle &= \sum_{k=1}^n \nu_k \phi(z_k) \psi(z_k) \\ &= \sum_{j=1}^m \sum_{k \in I_j} \nu_k \phi(c_j + \zeta_k) \psi(c_j + \zeta_k) \\ &= \sum_{j=1}^m \sum_{k \in I_j} \nu_k \left(\phi(c_j) \psi(c_j) + \zeta_k [\phi(z) \psi(z)]'_{z=c_j} + \mathcal{O}(\zeta_k^2), \zeta_k \rightarrow 0 \right) \\ &= \sum_{j=1}^m \mu_j \phi(c_j) \psi(c_j) + \sum_{j=1}^m \underbrace{\left(\sum_{k \in I_j} \nu_k \zeta_k \right)}_{=0} [\phi(z) \psi(z)]'_{z=c_j} + \sum_{k=1}^n \mathcal{O}(\zeta_k^2), \zeta_k \rightarrow 0 \\ &= \sum_{j=1}^m \mu_j \phi(c_j) \psi(c_j) + \sum_{k=1}^n \mathcal{O}(\zeta_k^2), \zeta_k \rightarrow 0. \end{aligned}$$

This proves the theorem. \square

Define the ordinary moments associated with $\langle \cdot, \cdot \rangle_m$ as $s_p^{(m)} := \langle 1, z^p \rangle_m$ for $p = 0, 1, 2, \dots$. Observe that $s_0^{(m)} = s_0$ and $s_1^{(m)} = s_1$. Define the vectors $\mathbf{s}, \mathbf{s}^{(m)} \in \mathbb{C}^{2N-1}$ as

$$\mathbf{s} := \begin{bmatrix} s_0 \\ s_1 \\ \vdots \\ s_{2N-2} \end{bmatrix} \quad \text{and} \quad \mathbf{s}^{(m)} := \begin{bmatrix} s_0^{(m)} \\ s_1^{(m)} \\ \vdots \\ s_{2N-2}^{(m)} \end{bmatrix}.$$

The entries of \mathbf{s} determine the Hankel matrix H_N . The previous theorem implies that

$$(6) \quad \frac{\|\mathbf{s} - \mathbf{s}^{(m)}\|_2}{\|\mathbf{s}\|_2} = \mathcal{O}(\delta^2), \delta \rightarrow 0.$$

Let $H_k^{(m)}$ be the $k \times k$ Hankel matrix

$$H_k^{(m)} := \left[s_{p+q}^{(m)} \right]_{p,q=0}^{k-1}$$

for $k = 1, 2, \dots$

Corollary 4. *Let $k \geq 1$. Then $\det H_k = \det H_k^{(m)} + \mathcal{O}(\delta^2)$, $\delta \rightarrow 0$.*

Proof. Let k be a positive integer. Then the previous theorem implies that

$$H_k = \left[s_{p+q} \right]_{p,q=0}^{k-1} = \left[s_{p+q}^{(m)} + \mathcal{O}(\delta^2), \delta \rightarrow 0 \right]_{p,q=0}^{k-1}.$$

The result follows by expanding the determinant of the matrix in the right hand side. \square

Corollary 5. *The matrix H_m is nonsingular if $\delta \rightarrow 0$. Let $t > m$. Then $\det H_t = \mathcal{O}(\delta^2)$, $\delta \rightarrow 0$.*

Proof. This follows from the previous corollary and the fact that $H_m^{(m)}$ is nonsingular whereas $H_t^{(m)}$ is singular for all integers $t > m$ (cf. Theorem 1). \square

The following theorem should be compared with Theorem 2.

Theorem 6. *Let t be an integer $\geq m$. Then $\varphi_t(c_j) = \mathcal{O}(\delta^2)$, $\delta \rightarrow 0$ for $j = 1, \dots, m$. Also $\langle z^p, \varphi_t(z) \rangle = \mathcal{O}(\delta^2)$, $\delta \rightarrow 0$ for all $p \geq t$.*

Proof. Let $t \geq m$. If t is a regular index, then

$$\langle z^p, \varphi_t(z) \rangle = 0, \quad p = 0, 1, \dots, t-1,$$

else

$$\langle z^p, \varphi_t(z) \rangle = 0, \quad p = 0, 1, \dots, r-1$$

where r is the largest regular index less than t . Corollary 5 implies that $r \geq m$, and thus we may conclude that

$$\langle z^p, \varphi_t(z) \rangle = 0, \quad p = 0, 1, \dots, m-1.$$

Theorem 3 then implies that

$$\langle z^p, \varphi_t(z) \rangle_m = \mathcal{O}(\delta^2), \quad \delta \rightarrow 0, \quad p = 0, 1, \dots, m-1.$$

In matrix notation this can be written as

$$\begin{bmatrix} 1 & \cdots & 1 \\ c_1 & \cdots & c_m \\ \vdots & & \vdots \\ c_1^{m-1} & \cdots & c_m^{m-1} \end{bmatrix} \begin{bmatrix} \mu_1 \\ \mu_2 \\ \ddots \\ \mu_m \end{bmatrix} \begin{bmatrix} \varphi_t(c_1) \\ \varphi_t(c_2) \\ \vdots \\ \varphi_t(c_m) \end{bmatrix} = \mathcal{O}(\delta^2), \quad \delta \rightarrow 0$$

where the right hand side represents a vector in \mathbb{C}^m whose entries are $\mathcal{O}(\delta^2)$, $\delta \rightarrow 0$. As the centres c_1, \dots, c_m are assumed to be mutually distinct and the weights μ_1, \dots, μ_m are different from zero, it follows that

$$\varphi_t(c_j) = \mathcal{O}(\delta^2), \quad \delta \rightarrow 0, \quad j = 1, \dots, m.$$

Theorem 3 then immediately implies that

$$\langle z^p, \varphi_t(z) \rangle = \mathcal{O}(\delta^2), \quad \delta \rightarrow 0$$

for all $p \geq t$. □

In other words, unless the FOP $\varphi_t(z)$ has a very flat shape near its zeros, we are likely to find good approximations for the centres c_1, \dots, c_m among the zeros of $\varphi_t(z)$ for all $t \geq m$. Note that

$$\begin{bmatrix} 1 & \cdots & 1 \\ c_1 & \cdots & c_m \\ \vdots & & \vdots \\ c_1^{m-1} & \cdots & c_m^{m-1} \end{bmatrix} \begin{bmatrix} \mu_1 \\ \mu_2 \\ \vdots \\ \mu_m \end{bmatrix} = \begin{bmatrix} s_0 \\ s_1 \\ \vdots \\ s_{m-1} \end{bmatrix} + \mathcal{O}(\delta^2), \quad \delta \rightarrow 0.$$

It follows that approximations for the weights μ_1, \dots, μ_m can be obtained by solving a Vandermonde system.

4. AN ACCURATE ALGORITHM TO COMPUTE ZEROS OF FOPs

We will now discuss an algorithm to compute zeros of FOPs. We consider the form $\langle \cdot, \cdot \rangle$ as it can be evaluated explicitly via numerical integration. Our numerical experiments indicate that our algorithm gives very accurate results.

Define the matrices G_k and $G_k^{(1)}$ as

$$G_k := [\langle \varphi_r, \varphi_s \rangle]_{r,s=0}^{k-1} \quad \text{and} \quad G_k^{(1)} := [\langle \varphi_r, \varphi_1 \varphi_s \rangle]_{r,s=0}^{k-1}$$

for $k = 1, 2, \dots$. Remember that the block orthogonality property of the FOPs implies that the Gram matrix G_n is block diagonal. The diagonal blocks are nonsingular, symmetric and zero above the main antidiagonal. If all the inner polynomials in a certain block are defined by using the standard monomial basis, then the corresponding diagonal block has Hankel structure. The matrix $G_n^{(1)}$ is block tridiagonal. The diagonal blocks are symmetric and lower anti-Hessenberg (i.e., its entries are equal to zero along all the antidiagonals that lie above the main antidiagonal, except

for the antidiagonal that precedes the main antidiagonal). Again, if all the inner polynomials in a certain block are defined by using the standard monomial basis, then the corresponding diagonal block is a Hankel matrix. The entries of the off-diagonal blocks are all equal to zero, except for the entry in the south-east corner. (For proofs and further details, we again refer to [6].)

The following theorem tells us that the zeros of a regular FOP can be calculated by solving a generalized eigenvalue problem. This will enable us to evaluate regular FOPs in their product representation, which is numerically very stable.

Theorem 7. *Let $t \geq 1$ be a regular index and let $z_{t,1}, \dots, z_{t,t}$ be the zeros of the regular FOP φ_t . Then the eigenvalues of the pencil $G_t^{(1)} - \lambda G_t$ are given by $\varphi_1(z_{t,1}), \dots, \varphi_1(z_{t,t})$. In other words, they are given by $z_{t,1} - \mu, \dots, z_{t,t} - \mu$ where $\mu = s_1/s_0$.*

Proof. Define the Hankel matrix $H_t^<$ as $H_t^< := [s_{1+k+l}]_{k,l=0}^{t-1}$. We will first show that the zeros of φ_t are given by the eigenvalues of the pencil $H_t^< - \lambda H_t$. The zeros of φ_t are given by the eigenvalues of its companion matrix C_t . Let λ^* be an eigenvalue of C_t and x a corresponding eigenvector. As H_t is nonsingular, we may conclude that $C_t x = \lambda^* x \Leftrightarrow H_t C_t x = \lambda^* H_t x$. Using (3) one can easily verify that $H_t C_t = H_t^<$.

Let A_t be the unit upper triangular matrix that contains the coefficients of $\varphi_0, \varphi_1, \dots, \varphi_{t-1}$. Then G_t can be factorized as $G_t = A_t^T H_t A_t$. As $\varphi_1(z) = z - \mu$ where $\mu = s_1/s_0$, the matrix $G_t^{(1)}$ is given by $[(\varphi_r, z\varphi_s)]_{r,s=0}^{t-1} - \mu G_t$. The matrix $[(\varphi_r, z\varphi_s)]_{r,s=0}^{t-1}$ can be written as $A_t^T H_t^< A_t$ and thus $G_t^{(1)} = A_t^T (H_t^< - \mu H_t) A_t$. Now let λ^* be an eigenvalue of the pencil $H_t^< - \lambda H_t$ and x a corresponding eigenvector. Then

$$\begin{aligned} H_t^< x &= \lambda^* H_t x \\ \Leftrightarrow (H_t^< - \mu H_t) x &= (\lambda^* - \mu) H_t x \\ \Leftrightarrow A_t^T (H_t^< - \mu H_t) A_t y &= \varphi_1(\lambda^*) A_t^T H_t A_t y \quad \text{if } y := A_t^{-1} x \\ \Leftrightarrow G_t^{(1)} y &= \varphi_1(\lambda^*) G_t y. \end{aligned}$$

This proves the theorem. \square

Regular FOPs are characterized by the fact that the determinant of a Hankel matrix is different from zero, while inner polynomials correspond to singular Hankel matrices. To decide whether $\varphi_t(z)$ should be defined as a regular FOP or as an inner polynomial, one could therefore calculate the determinant of H_t and check if it is equal to zero. However, from a numerical point of view such a test “is equal to zero” does not make sense. Because of rounding errors (both in the evaluation of $\langle \cdot, \cdot \rangle$ and the calculation of the determinant) we would encounter only regular FOPs. Strictly speaking one could say that inner polynomials are not needed in numerical calculations. However, the opposite is true! Let us agree to call a regular FOP *well-conditioned* if its corresponding Yule-Walker system (3) is well-conditioned, and *ill-conditioned* otherwise. To obtain a numerically stable algorithm, it is crucial to generate only well-conditioned regular FOPs and to replace ill-conditioned regular FOPs by inner polynomials. Stable look-ahead solvers for linear systems of equations that have Hankel structure are based on this principle [5, 7, 10]. In this approach the diagonal blocks in G_n are taken (slightly) larger than strictly necessary to avoid ill-conditioned blocks. A disadvantage is that part of the structure of G_n and $G_n^{(1)}$ gets lost, i.e., there will be some additional fill-in.

Our algorithm for computing zeros of analytic functions proceeds by calculating the polynomials $\varphi_0(z), \varphi_1(z), \dots, \varphi_n(z)$ in their product representation, starting with $\varphi_0(z) \leftarrow 1$ and $\varphi_1(z) \leftarrow z - \mu$. At each step we ask ourselves whether it is numerically feasible to generate the next polynomial in the sequence as a regular FOP. As the reader will see, there are several ways to find an answer to this question.

The value of n is determined as follows. Suppose that the algorithm has just generated a (well-conditioned) regular FOP $\varphi_r(z)$. To check whether $n = r$, we scan the sequence

$$\left(| \langle (z - \mu)^\tau \varphi_r(z), \varphi_r(z) \rangle | \right)_{\tau=0}^{N-1-r},$$

cf. Theorem 2. If all the elements are “sufficiently small,” then we conclude that indeed $n = r$ and we stop.

The form $\langle \cdot, \cdot \rangle$ is evaluated via numerical integration along γ , i.e., it is approximated by a quadrature sum. We assume that this sum is calculated in the standard way, by adding the terms one by one, in other words, by forming a sequence of partial sums. We ask the quadrature algorithm not only for an approximation of the integral, say **result**, but also for the modulus of the partial sum that has the largest modulus, say **maxpsum**. Then

$$\log_{10} \frac{\text{maxpsum}}{|\text{result}|}$$

is an estimate for the loss of precision. This information will turn out to be extremely useful, for example in the stopping criterion.

These considerations lead to the following algorithm.

Algorithm

input $\langle \cdot, \cdot \rangle$, ϵ_{stop}

output n , zeros

comment zeros = $\{z_1, \dots, z_n\}$. We assume that $\epsilon_{\text{stop}} > 0$.

$N \leftarrow \langle 1, 1 \rangle$

if $N == 0$ **then**

$n \leftarrow 0$; zeros $\leftarrow \emptyset$; **stop**

else

$\varphi_0(z) \leftarrow 1$

$\mu \leftarrow \langle z, 1 \rangle / N$; $\varphi_1(z) \leftarrow z - \mu$

$r \leftarrow 1$; $t \leftarrow 0$

while $r + t < N$ **do**

regular \leftarrow it is numerically feasible to generate $\varphi_{r+t+1}(z)$ as a regular FOP ... [1]

if regular **then**

generate $\varphi_{r+t+1}(z)$ as a regular FOP ... [2]

$r \leftarrow r + t + 1$; $t \leftarrow 0$

allsmall \leftarrow **true**; $\tau \leftarrow 0$

while allsmall **and** $(r + \tau < N)$ **do**

$[\text{ip}, \text{maxpsum}] \leftarrow \langle (z - \mu)^\tau \varphi_r(z), \varphi_r(z) \rangle$... [3]

$\text{ip} \leftarrow |\text{ip}|$

allsmall $\leftarrow (\text{ip}/\text{maxpsum} < \epsilon_{\text{stop}})$... [4]

$\tau \leftarrow \tau + 1$

end while

if allsmall **then**

$n \leftarrow r$; zeros \leftarrow roots(φ_r); **stop**

end if

else

generate $\varphi_{r+t+1}(z)$ as an inner polynomial ... [5]

$t \leftarrow t + 1$

end if

end while

$n \leftarrow N$; zeros \leftarrow roots(φ_N); **stop**

end if

Comments:

1. Statement [1] is crucial. But how does one decide that it is numerically feasible to generate the next polynomial in the sequence $\varphi_0(z), \varphi_1(z), \dots, \varphi_n(z)$ as a regular FOP? Suppose that the algorithm has just generated a regular FOP $\varphi_r(z)$. By using an explicit determinant expression for regular FOPs, one can show that $\langle \varphi_r(z), \varphi_r(z) \rangle = \det H_{r+1} / \det H_r$. Therefore, if r is a regular index, then $r + 1$ is a regular index if and only if $\langle \varphi_r(z), \varphi_r(z) \rangle \neq 0$. This

suggests the following criterion: if $|\langle \varphi_r(z), \varphi_r(z) \rangle| / \max \text{sum} < \epsilon_{\text{regular}}$, where $\epsilon_{\text{regular}}$ is some small threshold given by the user, then define $\varphi_{r+1}(z)$ as an inner polynomial, else define it as a regular FOP. However, as we will illustrate in the next section, it is very difficult to choose an appropriate value of $\epsilon_{\text{regular}}$.

We prefer to use the following criterion: act as if the next polynomial in the sequence, say $\varphi_t(z)$, is defined as a regular FOP, i.e., compute its zeros by computing the eigenvalues of the pencil $G_t^{(1)} - \lambda G_t$ and then check if these zeros lie sufficiently close to the interior of γ . If so, then define $\varphi_t(z)$ as a regular FOP, else define it as an inner polynomial. The idea behind this strategy is the following. If the matrix G_t is singular, in which case also the matrix H_t is singular of course, then the pencil $G_t^{(1)} - \lambda G_t$ has either a number of eigenvalues at infinity or a number of eigenvalues that may assume arbitrary values. Indeed, by using the structure of the matrices $G_t^{(1)}$ and G_t one can easily prove the following result, which complements Theorem 7.

Theorem 8. *Let $t \geq 1$ be an integer, let r be the largest regular index less than or equal to t , and let r' be the smallest regular index greater than t . (Define $r' := +\infty$ if $t \geq n$.) Then the eigenvalues of the pencil $G_t^{(1)} - \lambda G_t$ are given by the eigenvalues of the pencil $G_r^{(1)} - \lambda G_r$ and $t - r$ eigenvalues that may assume arbitrary values if $t < r' - 1$ or $t - r$ eigenvalues $\lambda = \infty$ if $t = r' - 1$.*

Each of these $t - r$ indeterminate eigenvalues corresponds to two corresponding zeros on the diagonals of the generalized Schur decomposition of $G_t^{(1)}$ and G_t . When actually calculated, these diagonal entries are different from zero because of roundoff errors. The quotient of two such corresponding diagonal entries is a spurious eigenvalue. Our strategy is based on the assumption that, if the matrix H_t , and thus also the matrix G_t , is nearly singular, then the computed eigenvalues of the pencil $G_t^{(1)} - \lambda G_t$ that correspond to the eigenvalues that lie at infinity or that may assume arbitrary values, lie far away from the interior of γ .

The reader may object that our criterion is too strict. Indeed, the zeros of the regular FOPs of degree $< n$ need not lie close to the interior of γ , except if the form $\langle \cdot, \cdot \rangle$ is a true (positive definite) inner product, in which case the zeros of the regular FOPs lie in the convex hull of $\{z_1, \dots, z_n\}$. (This follows from a general result on orthogonal polynomials. See, e.g., Van Assche [25].) Thus it may very well be the case that some of the computed zeros of a well-conditioned regular FOP lie far away from γ , in which case our algorithm decides to define this polynomial as an inner polynomial. In other words, our algorithm may define more inner polynomials than strictly necessary. However, we have done a lot of numerical tests, and have found that our strategy leads to very accurate results. Also, compared to the criterion based on inner products of the type $\langle \varphi_r(z), \varphi_r(z) \rangle$, another advantage is that the user doesn't have to supply a threshold such as $\epsilon_{\text{regular}}$.

2. Statement [2] means: define $\varphi_{r+t+1}(z)$ as $\varphi_{r+t+1}(z) \leftarrow \prod_{j=1}^{r+t+1} (z - \alpha_j)$. The zeros α_j are computed as $\alpha_j = \mu + \lambda_j$, $j = 1, \dots, r + t + 1$, where $\lambda_1, \dots, \lambda_{r+t+1}$ are the eigenvalues of the pencil $G_{r+t+1}^{(1)} - \lambda G_{r+t+1}$, cf. Theorem 7.
3. In statement [3] we use the inner product $\langle (z - \mu)^\tau \varphi_r(z), \varphi_r(z) \rangle$ and not $\langle z^\tau \varphi_r(z), \varphi_r(z) \rangle$ as it is likely that the former leads to more accurate results than the latter. If $\tau \leq r$, then one may also use $\langle \varphi_\tau(z) \varphi_r(z), \varphi_r(z) \rangle$. In general, if $\tau = \alpha r + \beta$, where $\alpha, \beta \in \mathbb{N}$ with $\beta < r$, then one may use $\langle [\varphi_r(z)]^{\alpha+1} \varphi_\beta(z), \varphi_r(z) \rangle$.
4. Observe that in statement [4] we do not compare ip with ϵ_{stop} but take into account the loss of precision as estimated by the quadrature algorithm. We have found this heuristic to be very reliable.
5. In statement [5] one may define $\varphi_{r+t+1}(z)$ as $\varphi_{r+t+1}(z) \leftarrow (z - \mu) \varphi_{r+t}(z)$ or $\varphi_{r+t+1}(z) \leftarrow \varphi_{t+1}(z) \varphi_r(z)$. Both versions are to be preferred to the "classical" $\varphi_{r+t+1}(z) \leftarrow z^{t+1} \varphi_r(z)$.

6. Instead of computing μ , the arithmetic mean of the zeros, as $\mu \leftarrow \langle z, 1 \rangle / N$, one can also use the following formula, which may give a more accurate result: $\mu \leftarrow w + \langle z - w, 1 \rangle / N$, where w is a point inside γ , preferably near the centre of the interior of γ .
7. As we represent our FOPs by using the product representation, $\varphi(z) = \prod_{\alpha \in \varphi^{-1}(0)} (z - \alpha)$, the function $\text{roots}(\cdot)$ is obviously *not* a function that calculates the zeros of a polynomial from its coefficients in the standard monomial basis.

What happens if we apply our algorithm in case the zeros of f can be grouped into clusters? The second part of Theorem 6 implies that our algorithm stops at $r = m$ if δ , the maximal size of the clusters, is sufficiently small. It returns the zeros of the FOP $\varphi_m(z)$ that is associated with $\langle \cdot, \cdot \rangle$. Theorem 3 and the fact that the m th degree FOP with respect to $\langle \cdot, \cdot \rangle_m$ is given by $\prod_{j=1}^m (z - c_j)$ imply that we can use these zeros as approximations $\hat{c}_1, \dots, \hat{c}_m$ for the centres of the clusters. (This also follows from the first part of Theorem 6, of course.) By solving the Vandermonde system

$$\begin{bmatrix} 1 & \cdots & 1 \\ \hat{c}_1 & \cdots & \hat{c}_m \\ \vdots & & \vdots \\ \hat{c}_1^{m-1} & \cdots & \hat{c}_m^{m-1} \end{bmatrix} \begin{bmatrix} \hat{\mu}_1 \\ \hat{\mu}_2 \\ \vdots \\ \hat{\mu}_m \end{bmatrix} = \begin{bmatrix} s_0 \\ s_1 \\ \vdots \\ s_{m-1} \end{bmatrix}$$

we obtain approximations $\hat{\mu}_1, \dots, \hat{\mu}_m$ for the weights of the clusters. These should be close to integers. We can check this, to verify that we have indeed determined the correct value of m . We can also calculate (approximations for) the ordinary moments associated with $\langle \cdot, \cdot \rangle_m$ and verify if (6) is satisfied.

5. NUMERICAL EXAMPLES

We have implemented our algorithm in Matlab. The m-files are available from the authors. In the following examples, the computations have been done via Matlab 5 (with floating point relative accuracy $\approx 2.2204 \cdot 10^{-16}$).

We have considered the case that γ is a circle. The following integration algorithm is used to approximate the form $\langle \cdot, \cdot \rangle$. Suppose that γ is the circle with centre c and radius ρ . Then

$$(7) \quad \langle \phi, \psi \rangle = \rho \int_0^1 \phi(c + \rho e^{2\pi i \theta}) \psi(c + \rho e^{2\pi i \theta}) \frac{f'(c + \rho e^{2\pi i \theta})}{f(c + \rho e^{2\pi i \theta})} e^{2\pi i \theta} d\theta.$$

Since this is the integral of a periodic function over a complete period, the trapezoidal rule is an appropriate quadrature rule. If $F : [0, 1] \rightarrow \mathbb{C}$ is the integrand in the right hand side of (7), then the q -point trapezoidal rule approximation to $\langle \phi, \psi \rangle$ is given by

$$\langle \phi, \psi \rangle = \int_0^1 F(\theta) d\theta \approx \frac{1}{q} \sum_{k=0}^q F(k/q) =: T_q.$$

The double prime indicates that the first and the last term of the sum are to be multiplied by $1/2$. As F is periodic with period one, we may rewrite T_q as

$$T_q = \frac{1}{q} \sum_{k=0}^{q-1} F(k/q).$$

This shows that T_q indeed depends on q (and not $q + 1$) points. As

$$T_{2q} = \frac{1}{2} T_q + T_{q \rightarrow 2q}$$

where

$$T_{q \rightarrow 2q} := \frac{1}{2q} \sum_{k=0}^{q-1} F\left(\frac{2k+1}{2q}\right),$$

successive doubling of q enables us in each step to reuse the integrand values needed in the previous step. In the following examples we started with $q = 16$ and continued doubling q until $|T_{2q} - T_q|$

was sufficiently small. More precisely, if S_q and $S_{q \rightarrow 2q}$ denote the modulus of the partial sum of qT_q respectively $2qT_{q \rightarrow 2q}$ that has the largest modulus, then our stopping criterion is given by $|T_{2q} - T_q| \leq S_{2q}10^{-14}$, where $S_{2q} := \max\{S_q, S_{q \rightarrow 2q}\}/2q$.

Lyness and Delves [20] studied the asymptotic behaviour of the quadrature error. They showed that the modulus of the error made by the q -point trapezoidal rule is asymptotically $\mathcal{O}(A^q)$ where $0 \leq A < 1$. More precisely,

$$A := \max\left\{\frac{|z_I|}{\rho}, \frac{\rho}{|z_E|}, \frac{\rho}{\rho_s}\right\}$$

where z_I is the zero of f that lies closest to γ and in the interior of γ , z_E is the zero of f that lies closest to γ and in the exterior of γ , and ρ_s is the distance between c and the nearest singularity of f .

Example 1. Our first example illustrates the importance of shifting the origin in the complex plane to the arithmetic mean of the zeros. It also compares the two strategies that we have proposed to decide whether it is numerically feasible to generate the next polynomial in the sequence $\varphi_0(z), \varphi_1(z), \dots, \varphi_n(z)$ as a regular FOP. We will see that it is indeed better to act as if the polynomial is a regular FOP, i.e., to compute its zeros by solving the generalized eigenvalue problem of Theorem 7, and then to check if these zeros lie sufficiently close to the interior of γ . If so, the polynomial is indeed defined as a regular FOP, else it is defined as an inner polynomial.

Suppose that $n = 3$, $z_1 = \epsilon$, $z_2 = \sqrt{3} + i$, $z_3 = \sqrt{3} - i$, and $\nu_1 = \nu_2 = \nu_3 = 1$. That is, suppose that $f(z) = (z - \epsilon)[(z - \sqrt{3})^2 + 1]$. If $\epsilon = 0$, then the Hankel matrix H_2 is exactly singular, i.e., $\varphi_2(z)$ has to be defined as an inner polynomial. We set $\epsilon = 10^{-2}$. Suppose that $\gamma = \{z \in \mathbb{C} : |z| = 3\}$. In the quadrature algorithm, we have evaluated the logarithmic derivative $f'(z)/f(z)$ of $f(z)$ via the formula

$$(8) \quad \frac{f'(z)}{f(z)} = \sum_{k=1}^n \frac{\nu_k}{z - z_k}.$$

We have taken $\epsilon_{\text{stop}} = 10^{-18}$. Our algorithm proceeds as follows. The total number of zeros N is equal to 3. The polynomial $\varphi_0(z)$ is of course defined as a regular FOP, $\varphi_0(z) \leftarrow 1$. The arithmetic mean μ is approximated by

$$1.158033871706381 \text{ e}+00 + \text{i } 1.526556658859590 \text{ e}-16.$$

The polynomial $\varphi_1(z)$ is also defined as a regular FOP, $\varphi_1(z) \leftarrow z - \mu$. The inner product $\langle \varphi_1(z), \varphi_1(z) \rangle$ is equal to 0.02303. To take into account the loss of precision, we divide by S_{2q} to obtain its scaled counterpart, which is equal to 0.01231. Is this that small that we should define $\varphi_2(z)$ as an inner polynomial? It seems not, and we decide to define $\varphi_2(z)$ as a regular FOP. Its zeros are approximated by

$$\begin{aligned} &1.158072473165547 \text{ e}+00 + \text{i } 1.513258564730580 \text{ e}-16 \\ &2.000049565733722 \text{ e}+02 + \text{i } 3.487413819470906 \text{ e}-12 \end{aligned}$$

Note how large the second zero is! The inner product $\langle \varphi_2(z), \varphi_2(z) \rangle$ is equal to 910.504. Its scaled counterpart is 0.01214. We decide to define $\varphi_3(z)$ as a regular FOP. Its zeros are approximated by

$$\begin{aligned} &1.732050807571817 \text{ e}+00 - \text{i } 1.000000000004209 \text{ e}+00 \\ &1.000000000661760 \text{ e}-02 + \text{i } 3.913802997325630 \text{ e}-12 \\ &1.732050807566777 \text{ e}+00 + \text{i } 1.000000000002807 \text{ e}+00 \end{aligned}$$

As $N = 3$, we may stop. The relative errors of the approximations for the zeros of f are $\mathcal{O}(10^{-12})$, except for the zero that approximates $z_1 = \epsilon$, which has a relative error of $\mathcal{O}(10^{-10})$. The absolute errors are $\mathcal{O}(10^{-12})$. The relative errors of the approximations for the multiplicities are $\mathcal{O}(10^{-11})$.

As one of the zeros of $\varphi_2(z)$ lies far away from the interior of γ , we should decide to define $\varphi_2(z)$ as an inner polynomial. Surprisingly, this does not improve the accuracy of the results. However, let us see what happens if we first shift the origin to μ , or, equivalently, if we consider the circle $\gamma = \{z \in \mathbb{C} : |z - \mu| = 2\}$. Note that we change both the centre and the radius of γ . By defining $\varphi_2(z)$ as a regular FOP, the accuracy of the results does not improve. However, if we define $\varphi_2(z)$ as an inner polynomial, the relative errors of the approximations for the zeros of f are $\mathcal{O}(10^{-16})$,

except for the zero that approximates $z_1 = \epsilon$, which has a relative error of $\mathcal{O}(10^{-14})$. The absolute errors are $\mathcal{O}(10^{-16})$. The relative errors of the approximations for the multiplicities are $\mathcal{O}(10^{-16})$. In other words, the results are indeed much better. \diamond

Example 2. Let $f(z) = e^{3z} + 2z \cos z - 1$ and $\gamma = \{z \in \mathbb{C} : |z| = 2\}$. We set $\epsilon_{\text{stop}} = 10^{-18}$. Our algorithm finds that $N = 4$. It defines $\varphi_0(z)$ and $\varphi_1(z)$ as regular FOPs. From the eigenvalues of the pencil $G_2^{(1)} - \lambda G_2$ it concludes that $\varphi_2(z)$ would have a zero of modulus ≈ 43 in case $\varphi_2(z)$ is defined as a regular FOP. Thus the algorithm decides to define $\varphi_2(z)$ as an inner polynomial. The polynomials $\varphi_3(z)$ and $\varphi_4(z)$ are defined as regular FOPs. Our algorithm concludes that $n = 4$. The computed approximations for the zeros of f are given by

$$\begin{aligned} & -1.844233953262213 \text{e}+00 - \text{i} \ 1.106288924192872 \text{e}-16 \\ & \ 5.308949302929297 \text{e}-01 + \text{i} \ 0.331791876751121 \text{e}+00 \\ & \ 5.308949302929303 \text{e}-01 - \text{i} \ 1.331791876751121 \text{e}+00 \\ & -5.412337245047638 \text{e}-15 + \text{i} \ 3.762630283199076 \text{e}-16 \end{aligned}$$

The corresponding approximations for the multiplicities are

$$\begin{aligned} & 1.000000000000001 \text{e}+00 + \text{i} \ 9.279422312879846 \text{e}-17 \\ & 1.000000000000001 \text{e}+00 - \text{i} \ 2.415808667423342 \text{e}-15 \\ & 1.000000000000001 \text{e}+00 + \text{i} \ 1.187431378902999 \text{e}-15 \\ & 9.99999999999974 \text{e}-01 + \text{i} \ 1.142195850770565 \text{e}-15 \end{aligned}$$

By refining the approximations for the zeros of f via Newton's method, we find that they have a relative error of $\mathcal{O}(10^{-16})$, except for the approximation of $z_4 = 0$, which has an absolute error of $\mathcal{O}(10^{-15})$. If $\varphi_2(z)$ is defined as a regular FOP, the errors are $\mathcal{O}(10^{-13})$. \diamond

Stewart's perturbation theory for the generalized eigenvalue problem [24] allows us to make a sensitivity analysis. The main result from his first order perturbation theory for simple eigenvalues tells us the following. If λ is a simple eigenvalue of the pencil $G_t^{(1)} - \lambda G_t$ and λ_ϵ is the corresponding eigenvalue of a perturbed pencil $\tilde{G}_t^{(1)} - \lambda \tilde{G}_t$ with $\|G_t^{(1)} - \tilde{G}_t^{(1)}\|_2 \approx \|G_t - \tilde{G}_t\|_2 \approx \epsilon$, then

$$\frac{|\lambda - \lambda_\epsilon|}{\sqrt{1 + |\lambda|^2} \sqrt{1 + |\lambda_\epsilon|^2}} \leq \frac{\epsilon}{\sqrt{|y^H G_t^{(1)} x|^2 + |y^H G_t x|^2}} + \mathcal{O}(\epsilon^2) =: \kappa(\lambda, x, y) \epsilon + \mathcal{O}(\epsilon^2)$$

where x and y are the right and left eigenvectors corresponding to λ ,

$$G_t^{(1)} x = \lambda G_t x \quad \text{and} \quad y^H G_t^{(1)} = \lambda y^H G_t,$$

normalized such that $\|x\|_2 = \|y\|_2 = 1$. Let us call $\kappa(\lambda, x, y)$ the *sensitivity factor* of λ .

Example 3. Suppose that $n = 10$,

$$\begin{aligned} z_1 &= -1, \\ z_2 &= 4, \quad z_3 = 4 + \delta(1 + i), \\ z_4 &= 3i, \quad z_5 = 3i + \delta(10 + 5i), \quad z_6 = 3i + \delta(-3 + 4i), \\ z_7 &= c + \delta(-1 + 2i), \quad z_8 = c + \delta(1 + 5i), \quad z_9 = c + \delta(1 + i), \quad z_{10} = c + \delta(-2 - 2i), \end{aligned}$$

where $c = -3 + 3i$ and $\delta = 10^{-4}$. Suppose that $\nu_1 = \dots = \nu_{10} = 1$. Let $f(z)$ be the polynomial that has z_1, \dots, z_{10} as simple zeros, $f(z) = \prod_{k=1}^{10} (z - z_k)$, and let $\gamma = \{z \in \mathbb{C} : |z| = 5\}$. Note that f has four clusters of zeros, $m = 4$, of weight 1, 2, 3 and 4, respectively. We have evaluated the logarithmic derivative of $f(z)$ again via formula (8). As we do not want the algorithm to stop as soon as it has found the approximations for the centres of the clusters, we set ϵ_{stop} to a rather small value, $\epsilon_{\text{stop}} = 10^{-18}$. Our algorithm gives the following results. The total number of zeros is equal to 10. The polynomials $\varphi_0(z)$ and $\varphi_1(z)$ are defined as regular FOPs. The computed eigenvalues of the pencil $G_2^{(1)} - \lambda G_2$ lead to zeros that lie inside γ , and thus the polynomial $\varphi_2(z)$ is defined as a regular FOP. The sensitivity factors of the eigenvalues are equal to

$$\begin{aligned} & 3.773765047881042 \text{e}-02 \\ & 9.474367914383353 \text{e}-03 \end{aligned}$$

The solution of the Vandermonde system that corresponds to the computed approximations for the zeros of $\varphi_2(z)$ is given by

$$\begin{aligned} & 7.050510110011339\text{e}+00 - i \ 2.941868186347331\text{e}-01 \\ & 2.949489889988664\text{e}+00 + i \ 2.941868186347336\text{e}-01 \end{aligned}$$

The algorithm computes $\langle \varphi_2(z), \varphi_2(z) \rangle$. In step [4] it compares

$$9.853283227226082\text{e}-01$$

with ϵ_{stop} and sets `allsmall` \leftarrow **false**. The polynomial $\varphi_3(z)$ is defined as a regular FOP. The sensitivity factors of the eigenvalues are equal to

$$\begin{aligned} & 5.221220847969128\text{e}-03 \\ & 5.691118489264763\text{e}-02 \\ & 9.440130958262826\text{e}-03 \end{aligned}$$

The solution of the Vandermonde system that corresponds to the computed approximations for the zeros of $\varphi_3(z)$ is given by

$$\begin{aligned} & 1.751672615711886\text{e}+00 + i \ 2.391215777821213\text{e}-02 \\ & 5.761474298212248\text{e}+00 + i \ 1.418723240124189\text{e}-01 \\ & 2.486853086075870\text{e}+00 - i \ 1.657844817906288\text{e}-01 \end{aligned}$$

The algorithm computes $\langle \varphi_3(z), \varphi_3(z) \rangle$. In step [4] it compares

$$9.560608076054004\text{e}-02$$

with ϵ_{stop} and sets `allsmall` \leftarrow **false**. The polynomial $\varphi_4(z)$ is defined as a regular FOP. The sensitivity factors of the eigenvalues are equal to

$$\begin{aligned} & 5.997609084856927\text{e}-03 \\ & 1.632514220886046\text{e}-02 \\ & 2.198497992029341\text{e}-02 \\ & 4.923118129602375\text{e}-03 \end{aligned}$$

The solution of the Vandermonde system that corresponds to the computed approximations for the zeros of $\varphi_4(z)$ is given by

$$\begin{aligned} & 1.99999998746185\text{e}+00 - i \ 1.260274035855700\text{e}-08 \\ & 4.000000263704519\text{e}+00 - i \ 1.428161173014011\text{e}-07 \\ & 2.999999744825852\text{e}+00 + i \ 2.437473983804684\text{e}-07 \\ & 9.99999927234455\text{e}-01 - i \ 8.832854039794525\text{e}-08 \end{aligned}$$

Observe that these ‘‘multiplicities’’ (actually, they are the weights of the clusters) are at a distance of $\mathcal{O}(10^{-8}) = \mathcal{O}(\delta^2)$ to integers. This is a first indication of the fact that $m = 4$. The algorithm computes $\langle \varphi_4(z), \varphi_4(z) \rangle$. In step [4] it compares

$$4.690246227384357\text{e}-09$$

with ϵ_{stop} . As we have given ϵ_{stop} a very small value, $\epsilon_{\text{stop}} = 10^{-18}$, the algorithm sets `allsmall` \leftarrow **false** and continues. It defines the polynomial $\varphi_5(z)$ as a regular FOP. The sensitivity factors of the eigenvalues are equal to

$$\begin{aligned} & 1.859124283121160\text{e}+02 \\ & 5.997664519337178\text{e}-03 \\ & 1.632900762729697\text{e}-02 \\ & 4.930300860498997\text{e}-03 \\ & 2.201051194773096\text{e}-02 \end{aligned}$$

Observe that one of the eigenvalues is much more sensitive than the others. The solution of the Vandermonde system that corresponds to the computed approximations for the zeros of $\varphi_5(z)$ is given by

$$\begin{aligned} & -4.028597029147776\text{e}-08 - i \ 1.692141150994100\text{e}-07 \\ & 2.000000007231077\text{e}+00 - i \ 8.308500282558695\text{e}-09 \\ & 4.000000510541128\text{e}+00 - i \ 2.651932814361151\text{e}-07 \\ & 1.000000192451618\text{e}+00 - i \ 8.614030726982243\text{e}-08 \\ & 2.999999330062146\text{e}+00 + i \ 5.288562050783197\text{e}-07 \end{aligned}$$

Observe that the component that corresponds to the spurious eigenvalue is of size $\mathcal{O}(10^{-8})$ whereas the other components are close to integers. This enables us to deduce the presence of spurious eigenvalues without computing the sensitivity factors. The algorithm computes $\langle \varphi_5(z), \varphi_5(z) \rangle$. In step [4] it compares

$$3.544154048709335 \text{e-}10$$

with ϵ_{stop} and sets `allsmall` \leftarrow `false`. The polynomial $\varphi_6(z)$ is defined as a regular FOP. The sensitivity factors of the eigenvalues are equal to

$$\begin{aligned} &1.617034259272598 \text{e+}02 \\ &1.220513781306331 \text{e+}01 \\ &5.997660002011287 \text{e-}03 \\ &1.633002045462034 \text{e-}02 \\ &4.929209225445833 \text{e-}03 \\ &2.200115675959345 \text{e-}02 \end{aligned}$$

The solution of the Vandermonde system that corresponds to the computed approximations for the zeros of $\varphi_6(z)$ is given by

$$\begin{aligned} &-1.109848867030467 \text{e-}07 - i \ 3.954458493988473 \text{e-}08 \\ &5.068148299128812 \text{e-}12 - i \ 6.003619075497872 \text{e-}13 \\ &2.00000007044562 \text{e+}00 - i \ 9.500131431430428 \text{e-}09 \\ &4.00000045291260 \text{e+}00 - i \ 3.668720544062149 \text{e-}07 \\ &1.000000170753607 \text{e+}00 - i \ 1.185972639722307 \text{e-}07 \\ &2.999999477890392 \text{e+}00 + i \ 5.345146309560269 \text{e-}07 \end{aligned}$$

The algorithm computes $\langle \varphi_6(z), \varphi_6(z) \rangle$. In step [4] it compares

$$1.189012222825083 \text{e-}09$$

with ϵ_{stop} and sets `allsmall` \leftarrow `false`. And so on. The algorithm defines $\varphi_7(z)$ as a regular FOP, $\varphi_8(z)$ as an inner polynomial, $\varphi_9(z)$ as a regular FOP, and finally $\varphi_{10}(z)$ as an inner polynomial. The computed approximations for the zeros of f are given by

$$\begin{aligned} &-9.99999999599027 \text{e-}01 + i \ 1.827471507453993 \text{e-}11 \\ &4.000066008247924 \text{e+}00 + i \ 5.012986226260452 \text{e-}05 \\ &4.000047628710319 \text{e+}00 - i \ 2.622572865154105 \text{e-}04 \\ &-5.868580001572310 \text{e-}05 + i \ 3.000189455314092 \text{e+}00 \\ &1.147726665656712 \text{e-}03 + i \ 3.000342939244789 \text{e+}00 \\ &-3.000001882960546 \text{e+}00 + i \ 3.000324337949845 \text{e+}00 \\ &-3.000258740452308 \text{e+}00 + i \ 2.999857462002724 \text{e+}00 \\ &-9.085700394437596 \text{e-}01 + i \ 1.866967988946470 \text{e+}00 \\ &-8.509233181288104 \text{e-}01 - i \ 6.684482268880147 \text{e+}00 \\ &-4.999300000000002 \text{e-}01 + i \ 2.100160000000000 \text{e+}00 \end{aligned}$$

The relative errors of the approximations for the zeros that belong to the clusters of weight 1 and 2 are $\mathcal{O}(10^{-11})$ and $\mathcal{O}(10^{-5})$, resp. For the other zeros, the relative errors are at least $\mathcal{O}(10^{-3})$.

If we set $\epsilon_{\text{stop}} = 10^{-6}$, then our algorithm stops at the polynomial of degree 4. We obtain the following approximations for the centres of the clusters:

$$\begin{aligned} &-9.99999564181510 \text{e-}01 - i \ 5.152524762408461 \text{e-}08 \\ &4.000050001653271 \text{e+}00 + i \ 5.000694739720757 \text{e-}05 \\ &2.335838430156945 \text{e-}04 + i \ 3.000299920075392 \text{e+}00 \\ &-3.000024926663507 \text{e+}00 + i \ 3.000149946356108 \text{e+}00 \end{aligned}$$

Let us now focus on the separate clusters. We have considered the circles whose centre is the computed approximation for the centre of a cluster and whose radius is equal to 0.1. The relative errors of the approximations for the zeros that we obtain are $\mathcal{O}(10^{-16})$, $\mathcal{O}(10^{-12})$, $\mathcal{O}(10^{-10})$ and $\mathcal{O}(10^{-6})$ for the clusters of weight 1, 2, 3 and 4, respectively. If we consider a circle whose centre is the computed approximation for the centre of the cluster of weight 4 and whose radius is equal to 10^{-3} , then the relative errors of the approximations that we obtain for the zeros that lie in this cluster are $\mathcal{O}(10^{-16})$. \diamond

More numerical examples will be given in Section 7.

6. RATIONAL INTERPOLATION AT ROOTS OF UNITY

We will now approach our problem of computing all the zeros of f that lie inside γ in a different way, based on rational interpolation at roots of unity. Interesting connections exist with the techniques presented in Sections 2, 3 and 4. We will show how the new approach complements the previous one.

Let K be a positive integer and let t_1, \dots, t_K be the K th roots of unity,

$$t_k = \exp\left(\frac{2\pi i}{K}k\right), \quad k = 1, \dots, K.$$

Define $g_{K-1}(z)$ as the polynomial

$$g_{K-1}(z) := s_0 z^{K-1} + s_1 z^{K-2} + \dots + s_{K-1}.$$

Note that $\deg g_{K-1}(z) = K - 1$ as $s_0 \neq 0$. Without loss of generality we may assume that $g_{K-1}(t_k) \neq 0$ for $k = 1, \dots, K$. (This condition will be needed in Theorem 9.)

Let $w_K(z) := z^K - 1$ and define the symmetric bilinear form $\langle\langle \cdot, \cdot \rangle\rangle$ as

$$\langle\langle \phi, \psi \rangle\rangle := \sum_{k=1}^K \frac{g_{K-1}(t_k)}{w'_K(t_k)} \phi(t_k) \psi(t_k)$$

for $\phi, \psi \in \mathcal{P}$. Note that this form can be evaluated via FFT.

Define the ordinary moments σ_p associated with the form $\langle\langle \cdot, \cdot \rangle\rangle$ as

$$\sigma_p := \langle\langle 1, z^p \rangle\rangle = \sum_{k=1}^K \frac{g_{K-1}(t_k)}{w'_K(t_k)} t_k^p$$

for $p = 0, 1, 2, \dots$ and let \mathcal{H}_k be the $k \times k$ Hankel matrix

$$\mathcal{H}_k := \left[\sigma_{p+q} \right]_{p,q=0}^{k-1} = \begin{bmatrix} \sigma_0 & \sigma_1 & \cdots & \sigma_{k-1} \\ \sigma_1 & & \ddots & \vdots \\ \vdots & \ddots & & \vdots \\ \sigma_{k-1} & \cdots & \cdots & \sigma_{2k-2} \end{bmatrix}$$

for $k = 1, 2, \dots$. Then the regular FOP f_τ of degree $\tau \geq 1$ associated with the form $\langle\langle \cdot, \cdot \rangle\rangle$ exists if and only if the matrix \mathcal{H}_τ is nonsingular. Also, the following theorem holds (cf. Theorem 1).

Theorem 9. $K = \text{rank } \mathcal{H}_{K+p}$ for every nonnegative integer p .

Thus \mathcal{H}_K is nonsingular whereas \mathcal{H}_τ is singular for $\tau > K$. The regular FOP f_K of degree K exists while regular FOPs of degree larger than K do not exist. The polynomial f_K is easily seen to be

$$f_K(z) = (z - t_1) \cdots (z - t_K) = w_K(z).$$

It is the monic polynomial of degree K that has t_1, \dots, t_K as simple zeros.

If \mathcal{H}_K is strongly nonsingular, then we have a full set $\{f_0, f_1, \dots, f_K\}$ of regular FOPs. Else, we can proceed in the same way as with the form $\langle \cdot, \cdot \rangle$. By filling up the gaps in the sequence of existing regular FOPs it is possible to define a sequence $\{f_\tau\}_{\tau=0}^\infty$, with f_τ a monic polynomial of degree τ , such that if these polynomials are grouped into blocks according to the sequence of regular indices, then polynomials belonging to different blocks are orthogonal with respect to $\langle\langle \cdot, \cdot \rangle\rangle$. More precisely, define $\{f_\tau\}_{\tau=0}^\infty$ as follows. If τ is a regular index, then let f_τ be the regular FOP of degree τ . Else define f_τ as $f_\rho p_{\tau,\rho}$ where ρ is the largest regular index less than τ and $p_{\tau,\rho}$ is an arbitrary monic polynomial of degree $\tau - \rho$. In the latter case f_τ is called an *inner polynomial*. If $p_{\tau,\rho}(z) = z^{\tau-\rho}$ then we say that f_τ is defined by using the standard monomial basis. The block orthogonality property is expressed by the fact that the Gram matrix $[\langle\langle f_r, f_s \rangle\rangle]_{r,s=0}^{K-1}$ is block diagonal. The diagonal blocks are nonsingular, symmetric and zero above the main antidiagonal. If all the inner polynomials in a certain block are defined by using the standard

monomial basis, then the corresponding diagonal block has Hankel structure. (Again, see [6] for more details.)

The definition of the form $\langle\langle \cdot, \cdot \rangle\rangle$ may seem arbitrary. However, there exists a remarkable connection between the forms $\langle \cdot, \cdot \rangle$ and $\langle\langle \cdot, \cdot \rangle\rangle$.

Theorem 10. *Let $\phi, \psi \in \mathcal{P}$. If $\deg \phi + \deg \psi \leq K - 1$, then $\langle\langle \phi, \psi \rangle\rangle = \langle \phi, \psi \rangle$.*

Proof. Let $V(t_1, \dots, t_K)$ be the Vandermonde matrix with nodes t_1, \dots, t_K ,

$$V(t_1, \dots, t_K) := \begin{bmatrix} 1 & t_1 & \cdots & t_1^{K-1} \\ \vdots & \vdots & & \vdots \\ 1 & t_K & \cdots & t_K^{K-1} \end{bmatrix}.$$

Then

$$\begin{bmatrix} g_{K-1}(t_1) \\ \vdots \\ g_{K-1}(t_K) \end{bmatrix} = V(t_1, \dots, t_K) \begin{bmatrix} s_{K-1} \\ \vdots \\ s_0 \end{bmatrix}.$$

As $V(t_1, \dots, t_K)/\sqrt{K}$ is unitary, it follows that

$$\begin{bmatrix} s_{K-1} \\ \vdots \\ s_0 \end{bmatrix} = \frac{1}{K} [V(t_1, \dots, t_K)]^H \begin{bmatrix} g_{K-1}(t_1) \\ \vdots \\ g_{K-1}(t_K) \end{bmatrix}.$$

As $w_K(z) = z^K - 1$, it follows that $w'_K(z) = Kz^{K-1}$ and thus $w'_K(t_k) = K/t_k$ for $k = 1, \dots, K$. Let $j \in \{1, \dots, K\}$. Then

$$\sigma_{K-j} = \frac{1}{K} \sum_{k=1}^K g_{K-1}(t_k) t_k^{K-j+1} = \frac{1}{K} \sum_{k=1}^K g_{K-1}(t_k) \overline{t_k^{j-1}}$$

and thus

$$\begin{aligned} \begin{bmatrix} \sigma_{K-1} \\ \sigma_{K-2} \\ \vdots \\ \sigma_0 \end{bmatrix} &= \frac{1}{K} \overline{\begin{bmatrix} 1 & \cdots & 1 \\ t_1 & \cdots & t_K \\ \vdots & & \vdots \\ t_1^{K-1} & \cdots & t_K^{K-1} \end{bmatrix}} \begin{bmatrix} g_{K-1}(t_1) \\ g_{K-1}(t_2) \\ \vdots \\ g_{K-1}(t_K) \end{bmatrix} \\ &= \frac{1}{K} [V(t_1, \dots, t_K)]^H \begin{bmatrix} g_{K-1}(t_1) \\ \vdots \\ g_{K-1}(t_K) \end{bmatrix} \\ &= \begin{bmatrix} s_{K-1} \\ s_{K-2} \\ \vdots \\ s_0 \end{bmatrix}. \end{aligned}$$

In other words, $s_p = \sigma_p$ for $p = 0, 1, \dots, K-1$. As $\langle\langle \phi, \psi \rangle\rangle$ depends on σ_p for $p = 0, 1, \dots, \deg(\phi\psi)$, this proves the theorem. \square

Corollary 11. *Let τ be a nonnegative integer. If $2\tau - 1 \leq K$, then τ is a regular index for $\langle\langle \cdot, \cdot \rangle\rangle$ if and only if τ is a regular index for $\langle \cdot, \cdot \rangle$. Moreover, if $2\tau \leq K$ and if τ is a regular index, then $f_\tau(z) \equiv \varphi_\tau(z)$. Else, if τ is not a regular index, then $f_\tau(z) = R_{\tau,\rho}(z)\varphi_\tau(z)$ where ρ is the largest regular index less than τ and $R_{\tau,\rho}(z)$ is a rational function of type $[\tau - \rho/\tau - \rho]$. If $f_\tau(z)$ and $\varphi_\tau(z)$ are both defined by using the standard monomial basis, then $R_{\tau,\rho}(z) \equiv 1$.*

Corollary 12. *If $K \geq 2n$ and $n \leq \tau \leq \lfloor K/2 \rfloor$, then $f_\tau(z_k) = 0$ for $k = 1, \dots, n$ and $\langle z^p, f_\tau(z) \rangle = 0$ for all $p \geq 0$. Also, $\langle\langle z^p, f_\tau(z) \rangle\rangle = 0$ for $p = \tau, \dots, K - 1 - \tau$. (Note that the latter range may be empty.)*

Corollary 13. *If $K \geq 2m$ and $m \leq \tau \leq \lfloor K/2 \rfloor$, then $f_\tau(c_j) = \mathcal{O}(\delta^2)$, $\delta \rightarrow 0$ for $j = 1, \dots, m$ and $\langle z^p, f_\tau(z) \rangle = \mathcal{O}(\delta^2)$, $\delta \rightarrow 0$ for all $p \geq \tau$. Also, $\langle \langle z^p, f_\tau(z) \rangle \rangle = \mathcal{O}(\delta^2)$, $\delta \rightarrow 0$ for $p = \tau, \dots, K-1-\tau$. (Note that the latter range may be empty.)*

Thus, if $K \geq 2N$, then we can apply our algorithm of Section 4 to the form $\langle \langle \cdot, \cdot \rangle \rangle$ and we will obtain exactly the same results as with the form $\langle \cdot, \cdot \rangle$. This is an interesting fact in its own right. The main reason, though, that motivated us to introduce the form $\langle \langle \cdot, \cdot \rangle \rangle$ is the fact that it is related to rational interpolation. We will show that the “denominator polynomials” in a certain linearized rational interpolation problem that is related to the polynomial $g_{K-1}(z)$ are FOPs with respect to $\langle \langle \cdot, \cdot \rangle \rangle$. This will lead to an alternative way to calculate the FOPs $f_\tau(z)$ and thus, because of Corollary 11, the FOPs $\varphi_\tau(z)$.

Let σ and τ be nonnegative integers such that $\sigma + \tau + 1 = K$. Let $p_\sigma(z)$ and $q_\tau(z)$ be polynomials, where

$$(9) \quad \deg p_\sigma(z) \leq \sigma \quad \text{and} \quad \deg q_\tau(z) \leq \tau,$$

such that the following linearized rational interpolation conditions are satisfied:

$$(10) \quad p_\sigma(t_k) - q_\tau(t_k)g_{K-1}(t_k) = 0, \quad k = 1, \dots, K.$$

Each pair of polynomials $(p_\sigma(z), q_\tau(z))$ that satisfies the degree conditions (9) and the interpolation conditions (10) is called a *multipoint Padé form* (MPF). The polynomials $p_\sigma(z)$ and $q_\tau(z)$ will be called *numerator polynomial* and *denominator polynomial*, respectively.

The interpolation conditions (10) lead to a system of K linear equations in $K+1$ unknowns, and thus at least one nontrivial (i.e., whose numerator and denominator polynomial are not identically equal to zero) MPF exists. As (10) are homogeneous linear equations, every scalar multiple of a MPF is also a MPF. From now on, we will always assume that MPFs are normalized such that the denominator polynomial is monic. However, the fact that then the number of interpolation conditions is equal to the number of unknown polynomial coefficients, does not guarantee that there exists only one MPF. It merely guarantees that every MPF leads to the same irreducible rational function, called *multipoint Padé approximant* (MPA). Indeed, suppose that there exist two MPAs. Then the numerator polynomial of the difference of these MPAs is a polynomial of degree $\leq \sigma + \tau$ that vanishes at $\sigma + \tau + 1$ points. This numerator polynomial is therefore identically equal to zero, which implies that the MPA is unique.

Let $\mathcal{R}_{\sigma, \tau}$ be the set of rational functions of type $[\sigma/\tau]$, i.e., with numerator degree at most σ and denominator degree at most τ . A rational interpolation problem that is closely related to (10) is the *Cauchy interpolation problem*: find all irreducible rational functions $r_{\sigma, \tau}(z) \in \mathcal{R}_{\sigma, \tau}$ whose denominator polynomial is monic, such that

$$(11) \quad r_{\sigma, \tau}(t_k) = g_{K-1}(t_k), \quad k = 1, \dots, K.$$

This interpolation problem is not always solvable. If a solution exists, then it is unique, and it is equal to the MPA. In general, however, the MPA need not solve the Cauchy interpolation problem: the numerator and denominator polynomials of the MPFs may have common zeros at some interpolation points. The MPA may not satisfy the interpolation condition (11) at these points, which are then called *unattainable points*.

Let $r(z) \in \mathcal{R}_{\sigma, \tau}$ and suppose that $r(z) = p(z)/q(z)$ where $p(z)$ and $q(z)$ are relatively prime polynomials. The *defect* of r with respect to $\mathcal{R}_{\sigma, \tau}$ is then defined as

$$\min\{\sigma - \deg p(z), \tau - \deg q(z)\}.$$

The following theorem gives the general solution of the linearized rational interpolation problem.

Theorem 14. *The general MPF that corresponds to the degree conditions (9) and the interpolation conditions (10) is given by*

$$(p_\sigma(z), q_\tau(z)) = (\hat{p}_\sigma(z)s(z)u(z), \hat{q}_\tau(z)s(z)u(z)),$$

where $\hat{p}_\sigma(z)$, $\hat{q}_\tau(z)$ and $s(z)$ are uniquely determined polynomials, and where $u(z)$ is arbitrary. The polynomials $\hat{p}_\sigma(z)$ and $\hat{q}_\tau(z)$ are relatively prime, and $s(z)$ is a divisor of $w_K(z)$. Let $\hat{\delta}_{\sigma, \tau}$ be

the defect of $\hat{p}_\sigma(z)/\hat{q}_\tau(z)$ with respect to $\mathcal{R}_{\sigma,\tau}$. Then $\deg s(z) \leq \hat{\delta}_{\sigma,\tau}$ and $\deg u(z) \leq \hat{\delta}_{\sigma,\tau} - \deg s(z)$. The zeros of $s(z)$ are the unattainable points for the corresponding Cauchy interpolation problem.

Proof. See, for example, Gutknecht [14, p. 549]. \square

The literature on rational interpolation is vast. We will not give a comprehensive account of all the other issues (in particular, the block structure of the Newton-Padé table) that are involved. The reader may wish to consult the papers by Meinguet [21], Antoulas [1, 2, 3], Berrut and Mittelmann [4] or Gutknecht [14, 15, 16, 17], and the references cited therein.

What is of special interest to us, is the fact that the denominator polynomials $q_\tau(z)$ are formal orthogonal polynomials with respect to $\langle\langle \cdot, \cdot \rangle\rangle$.

Theorem 15. *Let σ and τ be nonnegative integers such that $\sigma + \tau + 1 = K$. Let $(p_\sigma(z), q_\tau(z))$ be a MPF for the degree conditions (9) and the interpolation conditions (10). Then $\langle\langle z^p, q_\tau(z) \rangle\rangle = 0$ for $p = 0, 1, \dots, K - 2 - \deg p_\sigma(z)$ and $\langle\langle z^p, q_\tau(z) \rangle\rangle \neq 0$ if $p = K - 1 - \deg p_\sigma(z)$.*

Proof. Apparently this orthogonality relation was already known to Jacobi. As it plays a very important role in our paper, we prefer to give a (short, but explicit) proof. See also Egecioğlu and Koç [9] and Gemignani [11] for a slightly weaker version of this theorem.

Let $p \in \{0, 1, \dots, K - 2 - \deg p_\sigma(z)\}$. Then

$$(12) \quad \sum_{k=1}^K \frac{t_k^p p_\sigma(t_k)}{w'_K(t_k)} = \sum_{k=1}^K \frac{g_{K-1}(t_k)}{w'_K(t_k)} t_k^p q_\tau(t_k)$$

and $z^p p_\sigma(z)$ is a polynomial of degree $p + \deg p_\sigma(z) \leq K - 2$. Lagrange's formula for the polynomial $y_{K-1}(z)$ of degree $\leq K - 1$ that interpolates the polynomial $z^p p_\sigma(z)$ in the points t_1, \dots, t_K implies that the left hand side of (12) is equal to the coefficient of z^{K-1} of $y_{K-1}(z)$. As $\deg[z^p p_\sigma(z)] < K - 1$, it follows that $y_{K-1}(z) \equiv z^p p_\sigma(z)$ and that the coefficient of z^{K-1} of $y_{K-1}(z)$ is equal to zero. It follows that $\langle\langle z^p, q_\tau(z) \rangle\rangle = 0$ for $p = 0, 1, \dots, K - 2 - \deg p_\sigma(z)$. A similar reasoning shows that $\langle\langle z^p, q_\tau(z) \rangle\rangle \neq 0$ if $p = K - 1 - \deg p_\sigma(z)$. This proves the theorem. \square

The following theorem implies that the coefficients (in the standard monomial basis) of the numerator polynomial $p_\sigma(z)$ of a MPF $(p_\sigma(z), q_\tau(z))$ that corresponds to the degree conditions (9) and the interpolation conditions (10) can be expressed as inner products with respect to $\langle\langle \cdot, \cdot \rangle\rangle$. This explains how the degree property $\deg p_\sigma(z) \leq \sigma$ is related to the formal orthogonality property satisfied by $q_\tau(z)$.

Theorem 16. *Suppose that $q(z)$ is a polynomial, and let $p(z)$ be the polynomial of degree $\leq K - 1$ that interpolates $g_{K-1}(z)q(z)$ at the points t_1, \dots, t_K . Let $p(z) =: p_0 + p_1 z + \dots + p_{K-1} z^{K-1}$. Then $p_k = \langle\langle z^{K-1-k}, q(z) \rangle\rangle$ for $k = 0, 1, \dots, K - 1$.*

Proof. The Lagrange representation of $p(z)$ is given by

$$p(z) = \sum_{k=1}^K \pi_k L_k(z)$$

where

$$\pi_k := \frac{g_{K-1}(t_k)q(t_k)}{w'_K(t_k)} \quad \text{and} \quad L_k(z) := \frac{w_K(z)}{z - t_k}$$

for $k = 1, \dots, K$. Let $L_k(z) =: L_{0,k} + L_{1,k}z + \dots + L_{K-1,k}z^{K-1}$ for $k = 1, \dots, K$. Note that $L_{K-1,1} = \dots = L_{K-1,K} = 1$. Let

$$V := \begin{bmatrix} 1 & t_1 & \dots & t_1^{K-1} \\ \vdots & \vdots & & \vdots \\ 1 & t_K & \dots & t_K^{K-1} \end{bmatrix}$$

be the Vandermonde matrix with nodes t_1, \dots, t_K , and let

$$L := \begin{bmatrix} L_{0,1} & \cdots & L_{0,K} \\ \vdots & & \vdots \\ L_{K-1,1} & \cdots & L_{K-1,K} \end{bmatrix}$$

be the matrix that contains the coefficients of $L_1(z), \dots, L_K(z)$. Then

$$\begin{aligned} VL &= \text{diag}(L_1(t_1), \dots, L_K(t_K)) \\ &= \text{diag}(w'_K(t_1), \dots, w'_K(t_K)) \\ &= K \text{diag}(\overline{t_1}, \dots, \overline{t_K}). \end{aligned}$$

As V/\sqrt{K} is unitary, it follows that $V^{-1} = V^H/K$, and thus

$$L = V^H \text{diag}(\overline{t_1}, \dots, \overline{t_K}) = \begin{bmatrix} t_1^{K-1} & \cdots & t_K^{K-1} \\ \vdots & & \vdots \\ t_1 & \cdots & t_K \\ 1 & \cdots & 1 \end{bmatrix}.$$

In other words, $L_{j,k} = t_k^{K-1-j}$ for $k = 1, \dots, K$ and $j = 0, 1, \dots, K-1$. As $p_j = \sum_{k=1}^K L_{j,k} \pi_k$ for $j = 0, 1, \dots, K-1$, it follows that

$$p_j = \sum_{k=1}^K \frac{g_{K-1}(t_k)}{w'_K(t_k)} t_k^{K-1-j} q(t_k) = \langle \langle z^{K-1-j}, q(z) \rangle \rangle$$

for $j = 0, 1, \dots, K-1$. This proves the theorem. \square

The following theorem shows how to construct the sequence of FOPs $f_\tau(z)$ from the MPFs $(p_\sigma(z), q_\tau(z))$. Regular FOPs correspond to denominator polynomials whose degree is equal to τ whereas the sizes of the blocks are determined by the actual degrees of the numerator polynomials.

Theorem 17. *Let σ and τ be nonnegative integers such that $\sigma + \tau + 1 = K$. Let $(p_\sigma(z), q_\tau(z)) = (\hat{p}_\sigma(z)s(z)u(z), \hat{q}_\tau(z)s(z)u(z))$ be the general MPF for the degree conditions (9) and the interpolation conditions (10), where the polynomials $\hat{p}_\sigma(z)$, $\hat{q}_\tau(z)$, $s(z)$ and $u(z)$ are as in Theorem 14. If τ is a regular index for $\langle \langle \cdot, \cdot \rangle \rangle$, then $\deg(\hat{q}_\tau(z)s(z)) = \tau$, the FOP $f_\tau(z)$ is given by $f_\tau(z) \equiv \hat{q}_\tau(z)s(z)$ and the smallest regular index that is larger than τ is equal to $K - \deg(\hat{p}_\sigma(z)s(z))$. Conversely, if $\deg(\hat{q}_\tau(z)s(z)) = \tau$, then τ is a regular index for $\langle \langle \cdot, \cdot \rangle \rangle$.*

Proof. Suppose that τ is a regular index for $\langle \langle \cdot, \cdot \rangle \rangle$. Then $\det \mathcal{H}_\tau \neq 0$ and there exists precisely one monic polynomial $f_\tau(z)$ of degree τ such that

$$\langle \langle z^p, f_\tau(z) \rangle \rangle = 0 \quad \text{for } p = 0, 1, \dots, \tau - 1.$$

Let $p(z)$ be the polynomial of degree $\leq K-1$ that interpolates $g_{K-1}(z)f_\tau(z)$ at the points t_1, \dots, t_K . Then, according to Theorem 16, $\deg p(z) \leq K - \tau - 1 = \sigma$. Thus $(p(z), f_\tau(z))$ is a MPF for the degree conditions (9) and the interpolation conditions (10). In other words, there exists a MPF whose denominator polynomial has degree τ . Theorem 14 then implies that there exists a monic polynomial $u_\tau(z)$ of degree $\tau - \deg(\hat{q}_\tau(z)s(z))$ such that $f_\tau(z) \equiv \hat{q}_\tau(z)s(z)u_\tau(z)$. If $\deg u_\tau(z) > 0$, then we can choose a different monic polynomial $\tilde{u}_\tau(z)$ of the same degree. Then $f_\tau(z) \not\equiv \hat{q}_\tau(z)s(z)\tilde{u}_\tau(z)$ and, by Theorem 15,

$$\langle \langle z^p, \hat{q}_\tau(z)s(z)\tilde{u}_\tau(z) \rangle \rangle = 0 \quad \text{for } p = 0, 1, \dots, \tau - 1.$$

As $\deg(\hat{q}_\tau(z)s(z)\tilde{u}_\tau(z)) = \tau$, this contradicts the fact that $f_\tau(z)$ is unique. Thus we may conclude that $\deg(\hat{q}_\tau(z)s(z)) = \tau$ and $f_\tau(z) \equiv \hat{q}_\tau(z)s(z)$. Now Theorem 15 implies that

$$\langle \langle z^p, f_\tau(z) \rangle \rangle = 0 \quad \text{for } p = 0, 1, \dots, K - 2 - \deg(\hat{p}_\sigma(z)s(z))$$

and

$$\langle \langle z^p, f_\tau(z) \rangle \rangle \neq 0 \quad \text{if } p = K - 1 - \deg(\hat{p}_\sigma(z)s(z)).$$

The structure of the diagonal blocks of the Gram matrix $[\langle f_r, f_s \rangle]_{r,s=0}^{K-1}$ (see, e.g., [6]) then implies that $\det \mathcal{H}_t = 0$ for $t = \tau + 1, \dots, K - 1 - \deg(\hat{p}_\sigma(z)s(z))$ and that $\det \mathcal{H}_t \neq 0$ if $t = K - \deg(\hat{p}_\sigma(z)s(z))$.

Suppose that $\deg(\hat{q}_\tau(z)s(z)) = \tau$. Then there exists only one MPF for the degree conditions (9) and the interpolation conditions (10). The polynomial $\hat{q}_\tau(z)s(z)$ is a monic polynomial of degree τ and, according to Theorem 15,

$$\langle z^p, \hat{q}_\tau(z)s(z) \rangle = 0 \quad \text{for } p = 0, 1, \dots, \tau - 1.$$

Suppose that there exists another monic polynomial $\tilde{f}_\tau(z)$ of degree τ , $\tilde{f}_\tau(z) \not\equiv \hat{q}_\tau(z)s(z)$, such that

$$\langle z^p, \tilde{f}_\tau(z) \rangle = 0 \quad \text{for } p = 0, 1, \dots, \tau - 1.$$

Let $p(z)$ be the polynomial of degree $\leq K - 1$ that interpolates $g_{K-1}(z)\tilde{f}_\tau(z)$ at the points t_1, \dots, t_K . Then, according to Theorem 16, $\deg p(z) \leq K - \tau - 1 = \sigma$. Thus $(p(z), \tilde{f}_\tau(z))$ is a MPF for the degree conditions (9) and the interpolation conditions (10). It follows that $\tilde{f}_\tau(z) \equiv \hat{q}_\tau(z)s(z)$. In other words, there exists only one monic polynomial of degree τ that is orthogonal (with respect to $\langle \cdot, \cdot \rangle$) to all polynomials of lower degree. Thus τ is a regular index for $\langle \cdot, \cdot \rangle$. This proves the theorem. \square

The previous theorem suggests the following look-ahead strategy. Start with $\tau = 0$ and the corresponding MPF $(g_{K-1}(z), 1)$. Then set $\tau \leftarrow K - \deg g_{K-1}(z)$. Note that $\tau = 1$ in case $\deg g_{K-1}(z) = K - 1$. Compute the corresponding MPF $(p_\sigma(z), q_\tau(z))$. Note that, as τ is a regular index for $\langle \cdot, \cdot \rangle$, this MPF is uniquely defined, i.e., the polynomial $u(z) \equiv 1$ (cf. Theorem 14). Use $K - \deg p_\sigma(z)$ as the next value of τ , and so on. Observe that, if $\deg p_\sigma(z) = \sigma$, then the next value of τ is given by $\tau + 1$. The interpolation problems can be solved via the algorithm of Van Barel and Bultheel [26]. This algorithm provides the coefficients of the numerator and the denominator polynomial in the standard monomial basis. It incorporates pivoting.

Of course, in floating-point arithmetic this strategy will only work if one uses a concept of ‘numerical degree’ instead of the classical ‘degree’. The numerical degree of a polynomial can be defined as follows. Let $\epsilon > 0$. The ϵ -degree of a polynomial $p(z) =: p_0 + p_1z + \dots + p_{K-1}z^{K-1} \in \mathcal{P}$ of degree $\leq K - 1$ is defined as follows. Let

$$\chi(k) := \frac{\max\{|p_{k+1}|, \dots, |p_{K-1}|\}}{|p_k|}$$

for all $k \in \{0, 1, \dots, K - 2\}$ such that $p_k \neq 0$ and $\chi(k) := \infty$ otherwise. If

$$(13) \quad \min_{0 \leq k \leq K-2} \chi(k) \leq \epsilon,$$

then the ϵ -degree of $p(z)$ is defined as the index k for which the minimum in (13) is attained. Else, the ϵ -degree of $p(z)$ is set equal to $K - 1$.

The following corollaries provide us with a stopping criterion.

Corollary 18. *Let σ and τ be nonnegative integers such that $\sigma + \tau + 1 = K$. Let $(p_\sigma(z), q_\tau(z))$ be a MPF for the degree conditions (9) and the interpolation conditions (10). If $K \geq 2n$ and $n \leq \tau \leq \lfloor K/2 \rfloor$, then $\deg p_\sigma(z) \leq \deg q_\tau(z) - 1$.*

Proof. This follows immediately from Theorem 16, Theorem 10, and Corollary 12. \square

Corollary 19. *Let σ and τ be nonnegative integers such that $\sigma + \tau + 1 = K$. Let $(p_\sigma(z), q_\tau(z))$ be a MPF for the degree conditions (9) and the interpolation conditions (10). Let $p_\sigma(z) =: p_0 + p_1z + \dots + p_{K-1}z^{K-1}$. If $K \geq 2m$ and $m \leq \tau \leq \lfloor K/2 \rfloor$, then $p_k = \mathcal{O}(\delta^2)$, $\delta \rightarrow 0$ for $k = \deg q_\tau(z), \dots, K - 1$. In other words, if ϵ is sufficiently small, then the ϵ -degree of $p_\sigma(z)$ is less or equal than $\deg q_\tau(z) - 1$.*

Proof. This follows immediately from Theorem 16, Theorem 10, and Corollary 13. \square

In other words, at the end the (numerical) degree of the numerator polynomial is less or equal than the degree of the denominator polynomial minus one. One can easily verify that this stopping criterion is equivalent to the one used in the algorithm that we have presented in Section 4.

Let us consider the problem of how to evaluate the polynomial $g_{K-1}(z)$ at the K th roots of unity t_1, \dots, t_K . One can easily verify that

$$g_{K-1}(z) = \frac{1}{2\pi i} \int_{\gamma} \frac{t^K - z^K}{t - z} \frac{f'(t)}{f(t)} dt$$

if $z \notin \gamma$. Thus, if $t_k \notin \gamma$ for $k = 1, \dots, K$, then

$$g_{K-1}(t_k) = \frac{1}{2\pi i} \int_{\gamma} \frac{t^K - 1}{t - t_k} \frac{f'(t)}{f(t)} dt$$

for $k = 1, \dots, K$.

In case γ is the unit circle, one can obtain accurate approximations for $g_{K-1}(t_1), \dots, g_{K-1}(t_K)$ in a very efficient way. Let L be a positive integer $\geq K$, preferably a power of 2. Let $\omega_1, \dots, \omega_L$ be the L th roots of unity,

$$\omega_l = \exp\left(\frac{2\pi i}{L}l\right), \quad l = 1, \dots, L.$$

Theorem 20. *Suppose that γ is the unit circle. Define the vector $v_L \in \mathbb{C}^{L \times 1}$ as*

$$v_L := \frac{1}{L} \begin{bmatrix} 1 & \omega_1 & \cdots & \omega_1^{L-1} \\ \vdots & \vdots & & \vdots \\ 1 & \omega_L & \cdots & \omega_L^{L-1} \end{bmatrix}^H \begin{bmatrix} (f'/f)(\omega_1) \\ \vdots \\ (f'/f)(\omega_L) \end{bmatrix}.$$

Then

$$\begin{bmatrix} O_{L-K} & I_K \end{bmatrix} v_L \approx \begin{bmatrix} s_{K-1} \\ \vdots \\ s_0 \end{bmatrix}$$

where O_{L-K} denotes the $(L-K) \times (L-K)$ zero matrix and I_K the $K \times K$ identity matrix. In other words, the K last components of v_L are approximations for s_{K-1}, \dots, s_1, s_0 .

Proof. By approximating

$$s_p = \frac{1}{2\pi i} \int_{\gamma} z^p \frac{f'(z)}{f(z)} dz = \frac{1}{2\pi} \int_0^{2\pi} e^{ip\theta} e^{i\theta} \frac{f'(e^{i\theta})}{f(e^{i\theta})} d\theta, \quad p = 0, 1, 2, \dots,$$

via the trapezoidal rule, we obtain that

$$s_p \approx \frac{1}{L} \sum_{l=1}^L \omega_l^{p+1} \frac{f'(\omega_l)}{f(\omega_l)}, \quad p = 0, 1, 2, \dots$$

It follows that

$$s_p \approx \frac{1}{L} \sum_{l=1}^L \overline{\omega_l}^{L-1-p} \frac{f'(\omega_l)}{f(\omega_l)}, \quad p = 0, 1, \dots, L-1.$$

This proves the theorem. \square

Since

$$\begin{bmatrix} g_{K-1}(t_1) \\ \vdots \\ g_{K-1}(t_K) \end{bmatrix} = \begin{bmatrix} 1 & t_1 & \cdots & t_1^{K-1} \\ \vdots & \vdots & & \vdots \\ 1 & t_K & \cdots & t_K^{K-1} \end{bmatrix} \begin{bmatrix} s_{K-1} \\ \vdots \\ s_0 \end{bmatrix},$$

it follows that we can obtain approximations for $g_{K-1}(t_1), \dots, g_{K-1}(t_K)$ via one L -point (inverse) FFT and one K -point FFT.

7. MORE NUMERICAL EXAMPLES

We have implemented the strategy described in the previous section in Matlab. The m-files are available from the authors. In the following examples, the computations have been done via Matlab 5 (with floating point relative accuracy $\approx 2.2204 \cdot 10^{-16}$). We have considered the case that γ is the unit circle. Approximations for $g_{K-1}(t_1), \dots, g_{K-1}(t_K)$ have been computed by using Theorem 20. The interpolation problems have been solved via the algorithm of Van Barel and Bultheel [26].

Example 4. Let us reconsider the problem that we have studied in Example 3. As the corresponding γ is given by $\gamma = \{z \in \mathbb{C} : |z| = 5\}$, we divide all the zeros by 5 to transform the problem to the unit disk. Recall that $N = n = 10$ whereas $m = 4$. We set $L = 512$ and $K = 22$.

In Figure 1 we plot the logarithm with base 10 of the modulus of the coefficients of $p_\sigma(z)$ for $\tau = 0, 1, \dots, 5$. (The logarithm of the modulus of the lowest degree coefficient is shown on the left. In general, the coefficient of z^k corresponds to the abscis $k + 1$.) Note that $\sigma = 21 - \tau$.

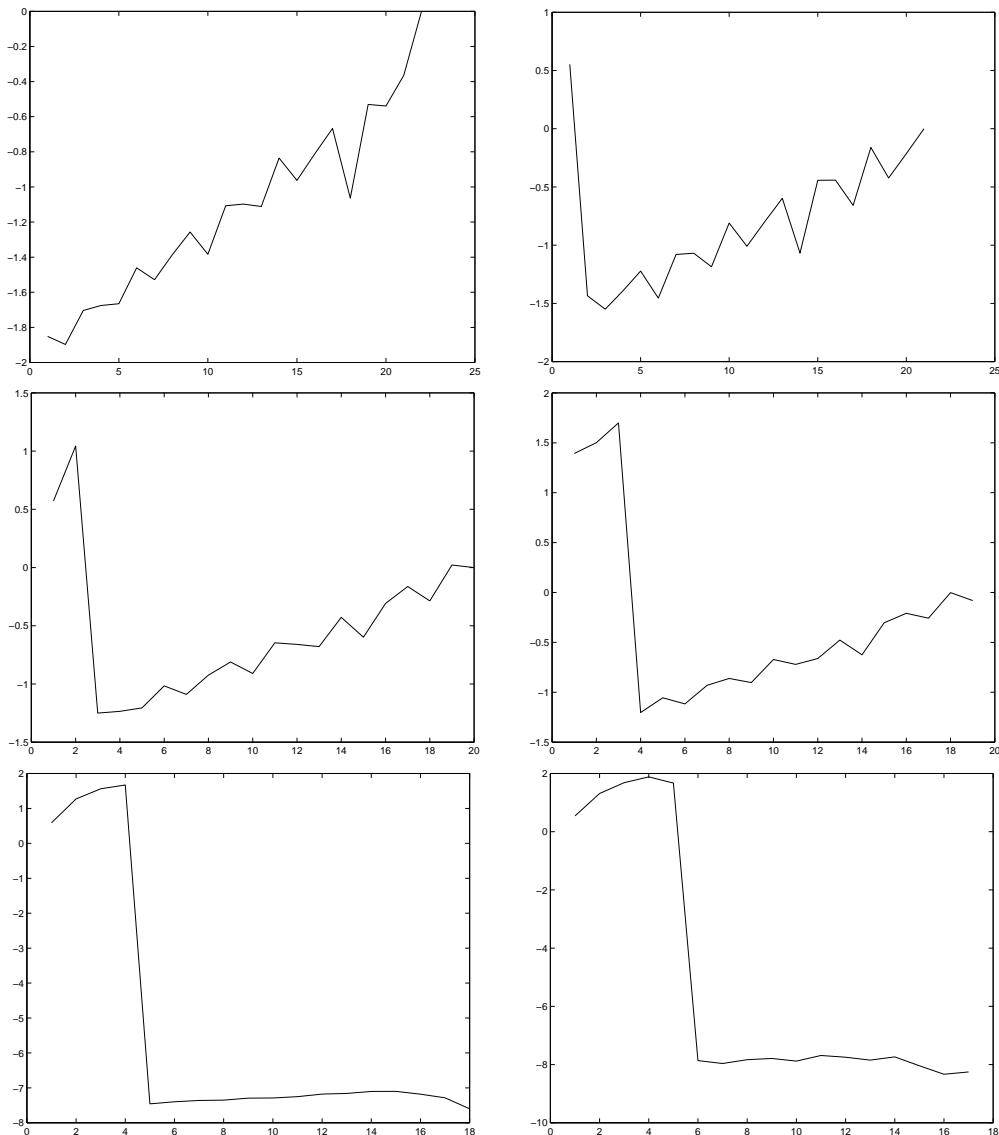


FIGURE 1. The coefficients of $p_\sigma(z)$ for $\tau = 0, 1, \dots, 5$

Clearly $m = 4$. By multiplying the zeros of $q_4(z)$, as computed via the Matlab command `roots`, by 5 to transform them back to the setting of Example 3, we obtain the following:

$$\begin{aligned} & -9.999999564178451\text{e-}01 - i \ 5.152536484956870\text{e-}08 \\ & \ 4.000050001653282\text{e+}00 + i \ 5.000694740214643\text{e-}05 \\ & \ 2.335838430343232\text{e-}04 + i \ 3.000299920075351\text{e+}00 \\ & -3.000024926663527\text{e+}00 + i \ 3.000149946356137\text{e+}00 \end{aligned}$$

These values are to be compared with the approximations for the centres of the clusters that we have obtained in Example 3, namely

$$\begin{aligned} & -9.999999564181510\text{e-}01 - i \ 5.152524762408461\text{e-}08 \\ & \ 4.000050001653271\text{e+}00 + i \ 5.000694739720757\text{e-}05 \\ & \ 2.335838430156945\text{e-}04 + i \ 3.000299920075392\text{e+}00 \\ & -3.000024926663507\text{e+}00 + i \ 3.000149946356108\text{e+}00 \end{aligned}$$

Example 5. Let

$$f(z) = (\sinh(2z^2) + \sinh(10z) - 1)(\sinh(2z^2) + \sinh(10z) - 1.01)(\sinh(2z^2) + \sinh(10z) - 1.02).$$

This function has 21 simple zeros inside the unit circle. They form 7 clusters, where each cluster consists of 3 zeros. Thus $N = n = 21$ and $m = 7$. This example was also studied in [23]. We set $L = 512$ and $K = 42$.

In Figure 2 we plot the logarithm with base 10 of the modulus of the coefficients of $p_\sigma(z)$ for $\tau = 0, 1, \dots, 7$.

The zeros of $q_7(z)$ are given by

$$\begin{aligned} & -1.848537713183581\text{e-}01 - i \ 8.949141853554533\text{e-}01 \\ & -1.848537713183412\text{e-}01 + i \ 8.949141853554334\text{e-}01 \\ & -1.003354151041395\text{e-}01 - i \ 3.061151582728444\text{e-}01 \\ & -1.003354151030711\text{e-}01 + i \ 3.061151582802838\text{e-}01 \\ & \ 1.335489810139705\text{e-}01 - i \ 6.084120926164355\text{e-}01 \\ & \ 1.335489810131479\text{e-}01 + i \ 6.084120926165633\text{e-}01 \\ & \ 8.777826151937687\text{e-}02 + i \ 8.843042856595357\text{e-}12 \end{aligned}$$

These match the approximations for the centres of the clusters that were given in [23].

ACKNOWLEDGEMENTS

This paper was initiated while Tetsuya Sakurai was staying at the Department of Mathematics and Computer Science of the University of Antwerp. He would like to thank Annie Cuyt for inviting him to Antwerp.

This research was supported by the Fund for Scientific Research-Flanders (FWO-V), projects ‘‘Orthogonal Systems and their Applications’’ (grant #G.0278.97) and ‘‘Counting and computing all isolated solutions of systems of nonlinear equations,’’ and by the Flemish Institute for the Promotion of Scientific and Technological Research in the Industry (IWT).

REFERENCES

1. A. C. Antoulas, *On the scalar rational interpolation problem*, IMA J. Math. Control Inf. **3** (1986), 61–88.
2. ———, *Rational interpolation and the Euclidean algorithm*, Linear Algebr. Appl. **108** (1988), 157–171.
3. A. C. Antoulas, J. A. Ball, J. Kang, and J. C. Willems, *On the solution of the minimal rational interpolation problem*, Linear Algebr. Appl. **137/138** (1990), 511–573.
4. J.-P. Berrut and H. D. Mittelmann, *Matrices for the direct determination of the barycentric weights of rational interpolation*, J. Comput. Appl. Math. **78** (1997), no. 2, 355–370.
5. A. W. Bojanczyk and G. Heinig, *A multi-step algorithm for Hankel matrices*, J. Complexity **10** (1994), no. 1, 142–164.
6. A. Bultheel and M. Van Barel, *Linear algebra, rational approximation and orthogonal polynomials*, Studies in Computational Mathematics, vol. 6, North-Holland, 1997.
7. S. Cabay and R. Meleshko, *A weakly stable algorithm for Padé approximants and the inversion of Hankel matrices*, SIAM J. Matrix Anal. Appl. **14** (1993), no. 3, 735–765.
8. L. M. Delves and J. N. Lyness, *A numerical method for locating the zeros of an analytic function*, Math. Comput. **21** (1967), 543–560.

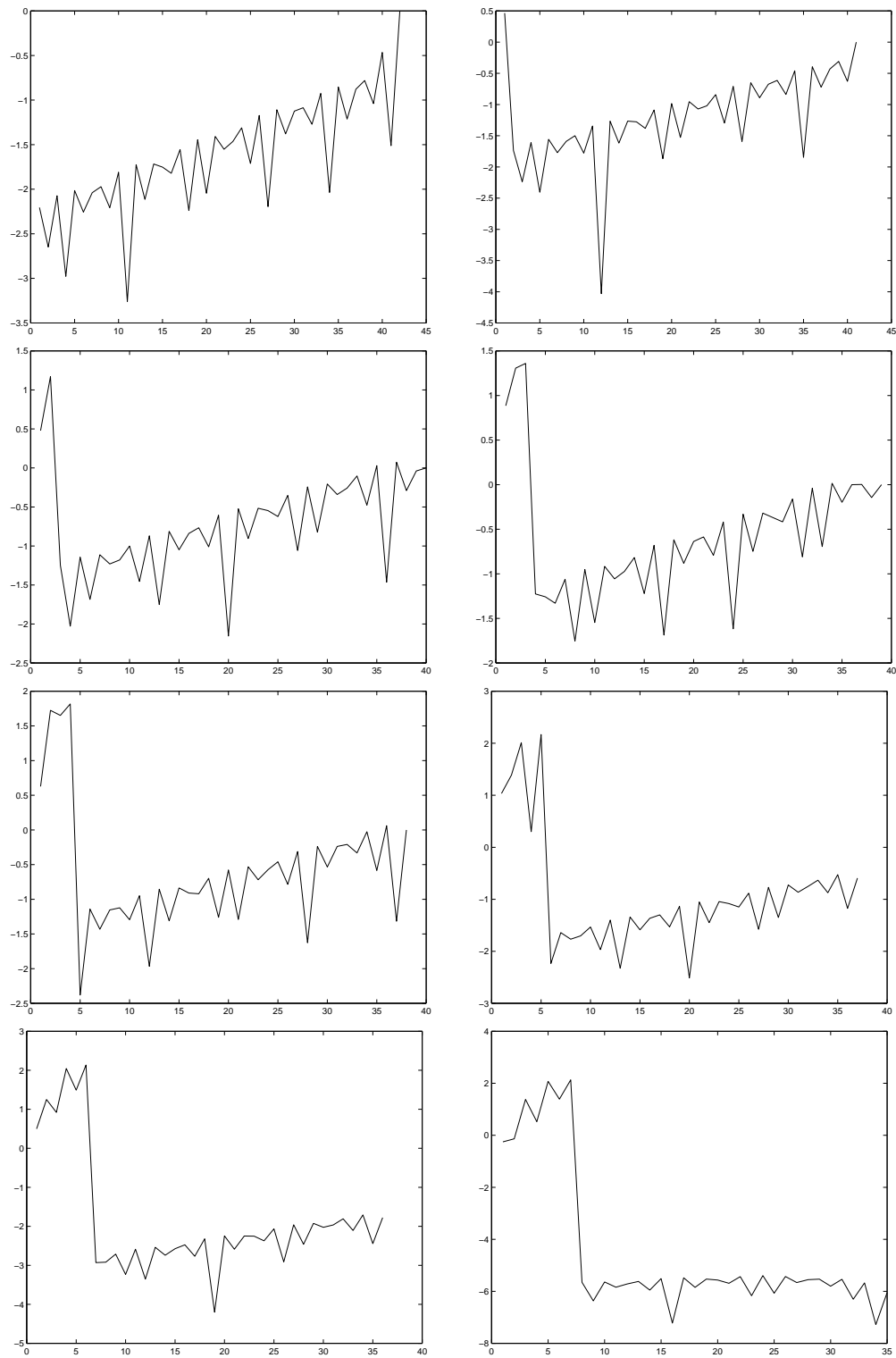


FIGURE 2. The coefficients of $p_\sigma(z)$ for $\tau = 0, 1, \dots, 7$

9. Ö. Eğecioğlu and Ç. K. Koç, *A fast algorithm for rational interpolation via orthogonal polynomials*, Math. Comput. **53** (1989), no. 187, 249–264.

10. R. W. Freund and H. Zha, *A look-ahead algorithm for the solution of general Hankel systems*, Numer. Math. **64** (1993), 295–321.
11. L. Gemignani, *Rational interpolation via orthogonal polynomials*, Computers Math. Appl. **26** (1993), no. 5, 27–34.
12. I. Gohberg and I. Koltracht, *Mixed, componentwise, and structured condition numbers*, SIAM J. Matrix Anal. Appl. **14** (1993), no. 3, 688–704.
13. W. B. Gragg and M. H. Gutknecht, *Stable look-ahead versions of the Euclidean and Chebyshev algorithms*, Approximation and Computation: A Festschrift in Honor of Walter Gautschi (R. V. M. Zahar, ed.), Birkhäuser, 1994, pp. 231–260.
14. M. H. Gutknecht, *Continued fractions associated with the Newton-Padé table*, Numer. Math. **56** (1989), 547–589.
15. ———, *In what sense is the rational interpolation problem well posed?*, Constr. Approx. **6** (1990), no. 4, 437–450.
16. ———, *The rational interpolation problem revisited*, Rocky Mt. J. Math. **21** (1991), no. 1, 263–280.
17. ———, *Block structure and recursiveness in rational interpolation*, Approximation Theory VII (E. W. Cheney, C. K. Chui, and L. L. Schumaker, eds.), Academic Press, 1992, pp. 93–130.
18. N. I. Ioakimidis, *Quadrature methods for the determination of zeros of transcendental functions—a review*, Numerical Integration: Recent Developments, Software and Applications (P. Keast and G. Fairweather, eds.), Reidel, Dordrecht, The Netherlands, 1987, pp. 61–82.
19. T.-Y. Li, *On locating all zeros of an analytic function within a bounded domain by a revised Delves/Lyness method*, SIAM J. Numer. Anal. **20** (1983), no. 4, 865–871.
20. J. N. Lyness and L. M. Delves, *On numerical contour integration round a closed contour*, Math. Comput. **21** (1967), 561–577.
21. J. Meinguet, *On the solubility of the Cauchy interpolation problem*, Approximation Theory (A. Talbot, ed.), Academic Press, 1970, pp. 137–163.
22. J. R. Partington, *An introduction to Hankel operators*, London Mathematical Society Student Texts, vol. 13, Cambridge University Press, 1988.
23. T. Sakurai, T. Torii, N. Ohsako, and H. Sugiura, *A method for finding clusters of zeros of analytic function*, Special Issues of Zeitschrift für Angewandte Mathematik und Mechanik (ZAMM). Issue 1: Numerical Analysis, Scientific Computing, Computer Science, 1996, Proceedings of the International Congress on Industrial and Applied Mathematics (ICIAM/GAMM 95), Hamburg, July 3–7, 1995, pp. 515–516.
24. G. W. Stewart, *Perturbation theory for the generalized eigenvalue problem*, Recent Advances in Numerical Analysis (C. De Boor and G. H. Golub, eds.), Academic Press, 1978, pp. 193–206.
25. W. Van Assche, *Orthogonal polynomials in the complex plane and on the real line*, Special Functions, q -Series and Related Topics (Providence, Rhode Island) (M. E. H. Ismail, D. R. Masson, and M. Rahman, eds.), Fields Institute Communications, vol. 14, American Mathematical Society, Providence, Rhode Island, 1997, pp. 211–245.
26. M. Van Barel and A. Bultheel, *A new approach to the rational interpolation problem*, J. Comput. Appl. Math. **32** (1990), 281–289.

KATHOLIEKE UNIVERSITEIT LEUVEN, DEPARTMENT OF COMPUTER SCIENCE, CELESTIJNENLAAN 200 A, B-3001 HEVERLEE, BELGIUM

E-mail address: Peter.Kravanja@na-net.ornl.gov

UNIVERSITY OF TSUKUBA, INSTITUTE OF INFORMATION SCIENCES AND ELECTRONICS, TSUKUBA 305, JAPAN

E-mail address: sakurai@is.tsukuba.ac.jp

KATHOLIEKE UNIVERSITEIT LEUVEN, DEPARTMENT OF COMPUTER SCIENCE, CELESTIJNENLAAN 200 A, B-3001 HEVERLEE, BELGIUM

E-mail address: Marc.VanBarel@cs.kuleuven.ac.be